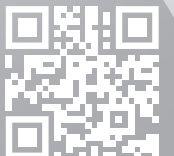




MEGASAN



Intensive Care Units



www.megasan.com.tr



MEGASAN Medikal entered the sector in 1981 with assembly and maintenance works and started production in 1998.

It continues its activities in its production facility established on a total area of 70 thousand m² with a closed area of 14 thousand m². There is also a showroom in Ankara where the R&D and sales departments are located. Today, **MEGASAN Medikal A. Ş.** is one of the largest medical gas manufacturers in Europe. In addition to intensive care units in its product range, it produces central gas plants, patient service and emergency service units, gas modules, gas adapters.

Today, **MEGASAN** has the rightful pride of offering dozens of best quality products and serves in gas installation projecting, installation and maintenance with its modern manufacturing building equipped with sensitive technological devices and equipments, engineers, extremely well-trained technicians, assembly and maintenance personnels. **MEGASAN Medikal**, is proud of its values and determined mind about getting better day by day.



Product Name: Horizontal Typet Intensive Care Unit - Aluminum Rail
Product Code: MG-YOYAx

Our aim; By closely following scientific and technological developments and following a policy parallel to the globalization process in the world, we aim to maintain our leading position in our sector and become a more respected company around the world, while also strengthening this leadership.

Megasan, has the CE (Conformity of Europe) certificate which is very rare in the medical sector in Turkey, proudly states once again that while providing the best service to all its customers;

"The quality of our products is our best reference."

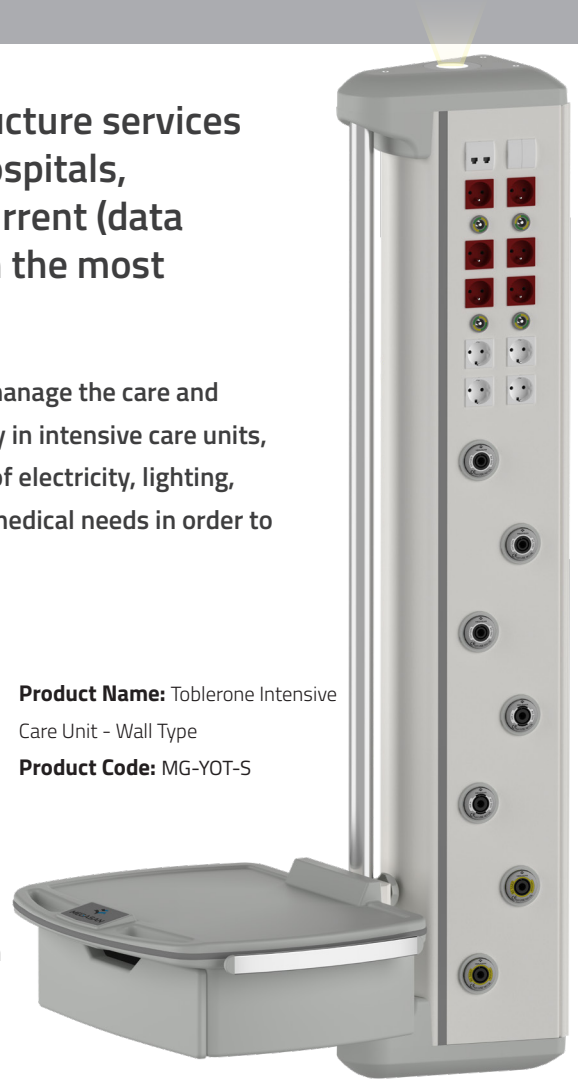


Product Name: Pendant Column Trolley
Product Code: MG-SMK

These are the units that ensure all the infrastructure services needed in the intensive care departments of hospitals, such as “medical gases, electricity and weak current (data communication)” are delivered to the patient in the most comfortable and fastest way.

They are multifunctional treatment assistive systems designed to manage the care and treatment processes of critically ill patients more effectively and safely in intensive care units, hospitals and healthcare facilities. These units provide a combination of electricity, lighting, low current (such as data communication), medical gases and similar medical needs in order to respond to the urgent needs of patients.

These units allow the devices and other equipment that patients and healthcare professionals will need to be positioned safely, closest to the patient and in the most appropriate way. In this way, it ensures that there is minimum cable and hose clutter around the patient. Therefore, it allows healthcare professionals to access the patient more easily and quickly. These units, manufactured in various shapes, are optimized according to the needs of different intensive care types and can be used in many different locations. For this reason, it is an indispensable element of all types of intensive care services in modern hospital architecture.



Product Name: Toblerone Intensive Care Unit - Wall Type
Product Code: MG-YOT-S

Product Conforming to the Following Standards:

- ✓ EN 62366-1 : 2015
- ✓ EN ISO 15223-1 : 2021
- ✓ EN ISO 20417 : 2021
- ✓ EN ISO 11197 : 2019
- ✓ EN ISO 14971 : 2020
- ✓ EN 5359 : 2012
- ✓ EN 60601-1 : 2009
- ✓ EN 60601-1-2 : 2016
- ✓ HTM 02-01

Intended Use:

Intensive care units are the units where various electrical armatures are located in addition to providing the necessary gases to the patients, together with the equipment rails on it, in order to ensure that the accessories and equipment to be used by the healthcare personnel can be used more easily.

Place of Use:

It is generally used in intensive care units (Internal, Surgical, Cardiology, Neonatal, Intensive care units...) and in some applications in Intervention rooms.



Product Name: Horizontal Typer Intensive Care Unit - Aluminum Rail
Product Code: MG-YOYAx

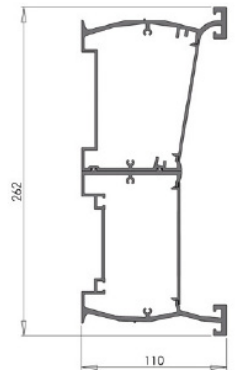
Horizontal Type Intensive Care Unit Aluminum Rail



Mounting Area Feature: A flat wall is required for the length of the unit.

Standard Unit Technical Characteristics (1 Patient):

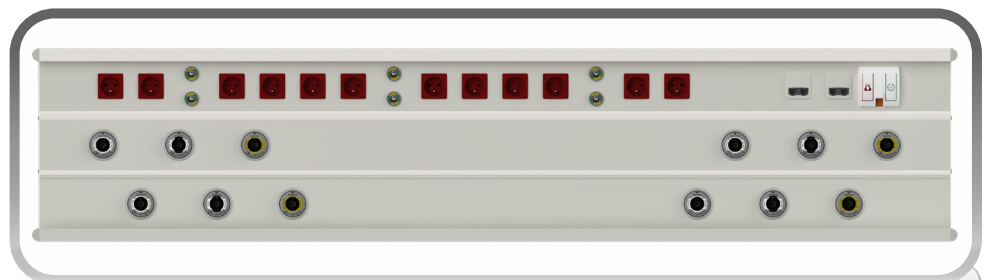
Product Code	: MG-YOYAx x:1,2,3
Product Name	: Horizontal Type Intensive Care Unit - Aluminum Rail
Carrying Capacity	: Max 100 Kg
Gas Equipment	: 3 x O ₂ , 3 x Vac, 2 x MA4 Gas Outlets
Electrical Equipment	: 12 x Power Outlets, 4 X Grounding Nodes
Operating Temperature	: (+10) - (+45) C°
Supply Voltage	: 220 V 50 Hz
Length	: 180 cm
Package Type	: Cardboard Box
Package Dimensions	: 182 x 27 x 12 cm
Package Weight	: 21 Kg
Product Main Material Structure	: Aluminum Extrusion Profile
Body Color	: Anodic Oxidation
Cover Color	: Blue, Yellow, Red, Lilac**
Antibacterial Paint Option	: Yes*
Accessories (Optional)	: IV Pole, Monitor Stand, Instrument Basket, Instrument Tray, Catheter Jar, Suction Jar, Acrobat Lamp, Hose Holder, Gas Adapters



*Antibacterial paint option may differ from normal paints.

**Different color options may be charged separately.

- Insulated Electrical System
- Safe and Full Production
- Halogen Free Cables
- Sleek and minimal design
- Easy Installation, Service and Maintenance
- Configuration Criteria
- Equipment Connection Rail



3 Channel Option

3 channel options to fit more gas and electricity needs

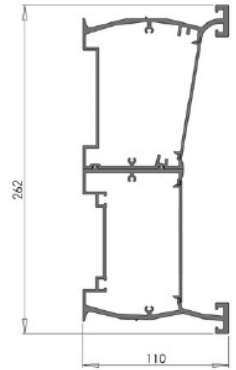
Horizontal Intensive Care Unit Stainless Steel Rail - Suspended Type



Mounting Area Feature: Suspended from the ceiling in front of windows, where there is no flat wall or in the center of the room

Standard Unit Technical Characteristics (1 Person):

Product Code	: MG-YOYA-Ax x:1,2,3
Product Name	: Horizontal Intensive Care Unit - Stainless Steel Rail - Suspended Type
Carrying Capacity	: Max 100 Kg
Gas Equipment	: 3 x O2 3 x Vac 2 x MA4 Gas Outlets
Electrical Equipment	: 12 x Power Outlets 4 x Grounding Nodes
Operating Temperature	: (+10) - (+45) C°
Supply Voltage	: 220 V 50 Hz
Length	: 180 cm
Package Type	: Cardboard Box
Package Dimensions	: 182 x 27 x 12 cm & Pole Lengths According to Ceiling Size
Package Weight	: 21 Kg & Pole Weight
Product Main Material Structure	: Aluminum Extrusion Profile & DKP Sheet & Box Profile
Antibacterial Paint Option	: Yes*
Cover Color	: Blue, Yellow, Red, Lilac**
Accessories (Optional)	: IV Pole, Monitor Stand, Instrument Basket, Instrument Tray, Catheter Jar, Suction Jar, Acrobat Lamp, Hose Holder, Gas Adapters



3 Channel Option

3 channel options to fit more gas and electricity needs

*Antibacterial paint option may differ from normal paints.

**Different color options may be charged separately.

- Insulated Electrical System
- Safe and Full Production
- Halogen Free Cables
- Elegant and minimal design
- Easy Installation, Service and Maintenance
- Configuration Criteria
- Equipment Connection Rail

Vertical Intensive Care Unit Premium

Mounting Area Feature: Window fronts, areas without flat walls or floor-ceiling connection application in the middle of the room

Standard Unit Technical Characteristics (1 Patient):

Product Code	: MG-YOD-P
Product Name	: Vertical Intensive Care Unit - Premium
Carrying Capacity	: Max 300 Kg
Gas Equipment	: According to Project
Electrical Equipment	: 8 x Power Outlets 4 x Grounding Nodes
Operating Temperature	: (+10) - (+45) C°
Supply Voltage	: 220 V 50 Hz
Package Type	: Packaging.
Cable Management System	: Yes
Easy Service and Maintenance	: Yes
Infusion Carrier Arm	: 2 Pcs (Ø25mm)
Product Main Material Structure	: Aluminum Extrusion Profile, PC ABS Plastic
Metal Parts Color	: RAL 9016
Plastic Part Color	: RAL 7035
Monitor Stand with Rail	: 2 Pcs
Monitor Stand with Drawer & Rail	: 1 Piece
Body Color	: Anodic oxidation
Antibacterial Paint Option	: Yes*
Cover Color	: Blue, Yellow, Red, Lilac**
Accessories (Optional)	: Gas Outlets, Serum Hanger, Instrument Basket, Suction Jar.

* Antibacterial paint option may differ from normal paints.

** Different color options may be charged separately.

- **Safe and Full Production**
- **Halogen Free Cables**
- **Elegant design**
- **Non-sharp and Easy-to-Clean Surfaces**
- **Easy Installation, Service and Maintenance, Configuration Criteria**
- **Ceiling Connection Flange Gas Electrical Connections (optional)**
- **Ceiling Gas NIST Connection (optional)**
- **High Carrying Capacity**
- **Cable Management System**
- **Easy Service & Maintenance Access**
- **Fully Insulated Electrical System**
- **High Gas and Electricity Connection Point Capacity**
- **Stainless Steel Infusion Tubing**
- **Height Adjustable Stand and Drawer**
- **Vertical Equipment Rail**



Vertical Intensive Care Unit Single Arm Suspended

Mounting Area Feature: In front of windows, where there is no flat wall or in the center of the room.

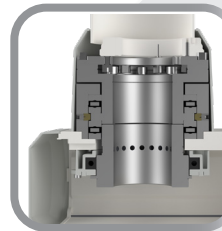
Standard Unit Technical Characteristics (1 Patient):

Product Code	: MG-YOD-T
Product Name	: Vertical Type Intensive Care Unit Single Arm Suspended
Carrying Capacity	: Max 200 Kg
Gas Equipment	: According to Project
Electrical Equipment	: 8 x Power Outlets 4 x Grounding Nodes
Operating Temperature	: (+10) - (+45) C°
Supply Voltage	: 220 V 50 Hz
Horizontal Arm Length	: 60cm
Package Type	: Packaging.
Cable Management System	: Yes
Ambience Lighting	: Yes
Easy Service and Maintenance	: Yes
LED Symbol and Color Coded Brake System	: Yes
Infusion Carrier Arm	: 2 Pcs (Ø25mm)
Product Main Material Structure	: Aluminum Extrusion Profile, PC ABS Plastic
Metal Parts Color	: RAL 9016
Plastic Part Color	: RAL 7035
Monitor Stand with Rail	: 2 Pcs
Monitor Stand with Drawer & Rail	: 1 Piece
Antibacterial Paint Option	: Yes*
Color Option	: Ral 9016
Accessories (Optional)	: Gas Outlets, Serum Hangers, Instrument Basket, Suction Jar.

*Antibacterial paint option may differ from normal paints.

**Different color options may be charged separately

- **Safe and Full Production**
- **Halogen Free Cables**
- **Elegant design**
- **Non-sharp and Easy-to-Clean Surfaces**
- **Easy Installation, Service and Maintenance, Configuration Criteria**
- **Ceiling Connection Flange Gas Electrical Connections (optional)**
- **Ceiling Gas NIST Connection (optional)**
- **High Carrying Capacity**
- **Cable Management System**
- **Easy Service & Maintenance Access**
- **Fully Insulated Electrical System**
- **High Gas and Electricity Connection Point Capacity**
- **Stainless Steel Infusion Tubing**
- **Height Adjustable Stand and Drawer**
- **Vertical Equipment Rail**
- **Ambient Lighting**
- **Symbol and Color Coded Led Light Control Panel**



Aluminum Arms with Pneumatic Brake:

The pendant allows the service head to be positioned in the most suitable way for the working environment and to stand rigidly there, offering 340 degrees of rotation around its own axis

Symbol and Color Coded Led Light Control Panel:

It is enriched with the shape of the relevant unit, which shows the mode of the working mechanism with a color indicator when the button is pressed.



Toblerone

Intensive Care Unit - Wall Type

Mounting Area Feature: Minimum wall width of 35 cm.

Standard Unit Technical Characteristics (2 Patients):

Product Code	: MG-YOT-S
Product Name	: Toblerone Intensive Care Unit - Wall
Type	
Loading Capacity	: Max 100 Kg
Gas Equipment	: 6 x O ₂ 6 x Vac 4 x MA4 Gas Outlets
Electrical Equipment	: 24 x Power Outlets 8 x Grounding Nodes
Operating Temperature	: (+10) - (+45) C°
Supply Voltage	: 220 V 50 Hz
Length	: 181 cm
Package Type	: Packaging.
Cable Management System	: Yes
Ambience Lighting	: Yes
Easy Service and Maintenance	: Yes
Infusion Carrier Arm	: 1 pc (Ø38mm)
Product Main Material Structure	: Aluminum Extrusion Profile PC ABS Plastic
Metal Parts Color	: RAL 9016
Plastic Part Color	: RAL 7035
Monitor Stand with Drawer & Rail	: 1 Piece
Antibacterial Paint Option	: Yes*
Color Option	: Blue, Yellow, Red, Lilac**
Accessories (Optional)	: Gas Outlets, Serum Hanger, Instrument Basket, Suction Jar, Monitor Stand

*Antibacterial paint option may differ from normal paints.

**Different color options may be charged separately.

- **Safe and Full Production**
- **Halogen Free Cables**
- **Elegant design**
- **Non-sharp and Easy-to-Clean Surfaces**
- **Easy Installation, Service and Maintenance, Configuration Criteria**
- **High Carrying Capacity**
- **Cable Management System**
- **Easy Service & Maintenance Access**
- **Fully Insulated Electrical System**
- **High Gas and Electricity Connection Point Capacity**
- **Stainless Steel Infusion Tubing**
- **Height Adjustable Stand and Drawer**
- **Vertical Equipment Rail**
- **Ambient Lighting**



Pendant Column Trolley

Usage: Wheeled units that make patient intervention easier in environments where wall access is restricted

Standard Unit Technical Characteristics (1 Patient):

Product Code	: MG-SMK
Product Name	: Pendant Column Trolley
Carrying Capacity	: Max 100 Kg
Gas Equipment	: Depending on the Project
Electrical Equipment	: 8 x Power Outlets 4 x Grounding Nodes
Operating Temperature	: (+10) - (+45) C°
Supply Voltage	: 220 V 50 Hz
Package Type	: Packaging
Cable Management System	: Yes
Ambience Lighting	: Yes
Easy Service and Maintenance	: Yes
Infusion Carrier Arm	: 2 Pcs (Ø25mm)
Main Material Structure of Product	: Aluminum Extrusion Profile, PC ABS Plastic
Metal Parts Color	: RAL 9016
Plastic Part Color	: RAL 7035
Monitor Stand with Rail	: 1 Piece
Monitor Stand with Drawer & Rail	: 1 Piece
Accessories (Optional)	: Gas Outlets, Serum Hanger, Instrument Basket, Suction Jar

*Antibacterial paint option may differ from normal paints.

**Different color options may be charged separately.



- **Safe and Full Production**
- **Halogen Free Cables**
- **Elegant design**
- **Non-sharp and Easy-to-Clean Surfaces**
- **Easy Installation, Service and Maintenance, Configuration Criteria**
- **High Carrying Capacity**
- **Cable Management System**
- **Easy Service & Maintenance Access**
- **Fully Insulated Electrical System**
- **High Gas and Electricity Port Capacity**
- **Stainless Steel Infusion Tubes**
- **Height Adjustable Table and Drawer**
- **Vertical Equipment Rail**
- **Ambient Lighting**



Portable Connection Nists:

Secure connection for energy and medical gas supplies with password NISTs specific to each gas.

Excellent Mobility:

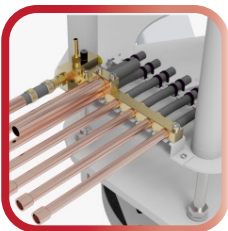
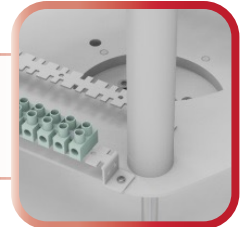
It allows the trolley to be moved and positioned comfortably in the room. There are anti-bump guides that prevent damage to the trolley or wall in case of friction, bumps and lateral impacts, allowing the unit to keep moving.



OPTIONAL FEATURES

Ceiling Connection Flange Gas Electrical Connections

It allows easy connection and disconnection of gas and electricity at any time during installation, maintenance and service.



Ceiling Gas NIST Connection

Gas-specific connection to prevent incorrect connection of rigid pipelines marked with color-coded flexible connections.

High Ceiling Connection Frame System

Applied for ceiling connections over 3 meters. Provides excellent strength and durability. Resistant against oxidation and corrosion.



Wide Body Option

Wide body that can meet more gas and electricity needs.

STANDARD FEATURES

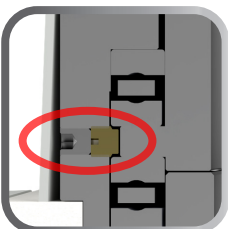


Cable Management System

Eliminates the clutter of cables, eliminates unaesthetic view and minimizes the risk of accidents due to cables in emergency situations.

Easy Service & Maintenance Access

The hinged design allows quick access to all solenoid valves and connections positioned inside the service head. Prevents repeated opening of ceilings and disruption of the sterile zone.



Adjustable Friction Brake Joint

Friction brake joint system with adjustable tightness according to different load capacities.

Fully Insulated Electrical System

Electrical outlets attached to the body with flame-proof plastic plugs, ensuring that no electrical leakage will pass through the body and that both patients and healthcare personnel will not be electrocuted.



High Number of Gas and Electric Outlets Capacity

Gas and electricity outlets capacity is available to meet the needs of all work areas.



Stainless Steel Infusion Pipes

Easy connection for all pumps and related devices thanks to diameter 25mm stainless steel infusion pipes.



Height Adjustable Table and Drawer

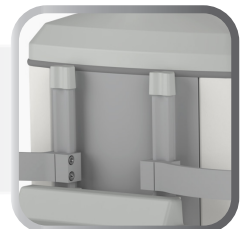
Height adjustable and easy to position 35 kilogram carrying capacity table and 15 kg carrying capacity drawer, with 30x10 rails on the sides.

**It has 4 types of drawer options: small (56x47 cm), large (66x49 cm), large single drawer and large double drawer. The interior of the drawer measures 43x35x11 cm.



Vertical Equipment Rail

Easy connection of the desired accessories thanks to 2 fixed, 25x10mm vertical equipment rails on the unit.



Symbol and Color Coded LED Illuminated Control Panel

It is enriched with the shape of the relevant unit, which shows the mode of the working mechanism with a color indicator when the button is pressed.



Non-sharp and Easy-to-Clean Surfaces

The ergonomic and functional design minimizes injuries from bumps and trips. The pendants have plastic patterns with minimized surface roughness and a finely grainy powder-coated finish and are perfectly cleanable.



Connection Adapter Options

Gas and electric outlets can be optionally selected according to the required standards.



Ceiling Covering Plastic Cap

Can be opened to access the ceiling when necessary.



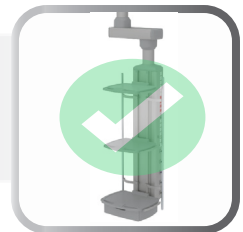
Ventilation Grilles

Ventilation openings to prevent gas traps inside the unit.



Safe and Full Production

All gas and electrical components inlet points and installation connection provision holes were drilled before painting, internal wiring and tubing were completed before product delivery and all tests were carried out according to EN 60601-1.



Ambient Lighting

It is a guiding light that helps healthcare workers to navigate in dark environments without disturbing patients.



Halogen-Free Cables

All internal wiring is equipped with halogen-free cables, as are the plastic insulating plugs of the electrical outlets.



HARNESSING THE POWER OF THE SUN FOR A SUSTAINABLE FUTURE



MEDİKAL GAZ SİSTEMLERİ TIBBİ ALET ve CİHAZLAR A.Ş.

SHOWROOM

📍 Yenibatu Mah. 24/12/19 06370 Batıkent Ankara-TURKEY

☎ +90 (312) 865 18 18 - 865 18 21 📠 +90 (312) 865 18 22

HQ

📍 Cumhuriyet Mah. Zafer İş Hanı No:33/411 18100 Merkez/Çankırı-TÜRKİYE

FACTORY

📍 Dere Mahallesi Sağlık Sokak No:29 18700 Eldivan/ÇANKIRI-Türkiye

☎ +90 (376) 218 10 25 - 218 14 07 📠 +90 (376) 218 12 26

☎ +90 (541) 218 10 25 +90 (533) 323 61 63 +90 (555) 982 48 98

DISTRIBUTOR

✉ info@megasan.com.tr 🌐 www.megasan.com.tr