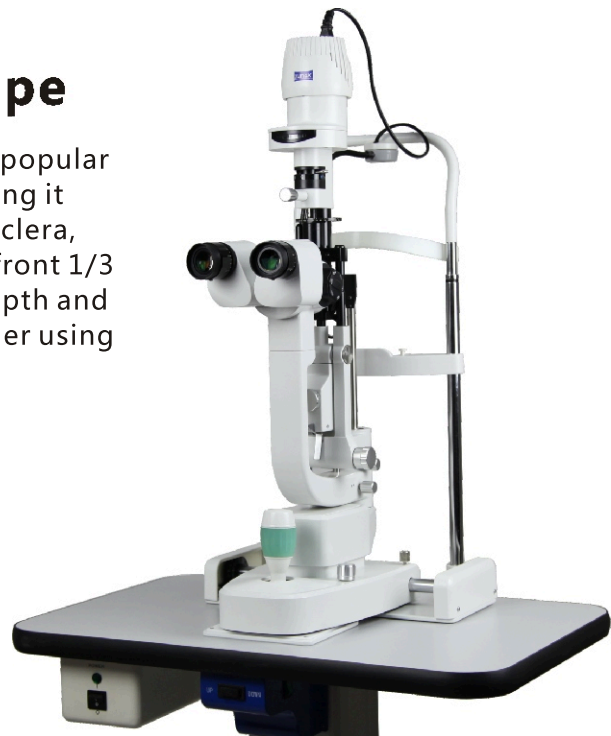
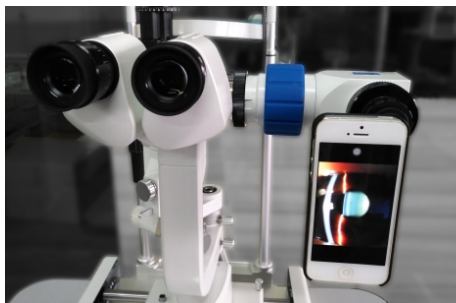


# SL260 Slit Lamp Microscope

Zumax SL260 Slit Lamp Microscope --- the most popular & important ophthalmic optic equipment. By using it ophthalmologists observe eyelid, conjunctiva, sclera, cornea, iris, anterior chamber, pupil, lenses and front 1/3 part of vitreum, evaluate lesion position, size, depth and characteristics, with accessories, it has much wider using scope.



## Technical Specifications

Microscope Type	Galilean Stereoscopic Microscope
Objective Magnification	Five-step Drum Magnification
Eye Piece	12.5X
Magnification (Field of View)	6x(Φ33mm),10x(Φ22.5mm),16x(Φ14mm),25x(Φ8.8mm),40x(Φ5.5mm)
Pupil Distance	55mm~75mm
Diopter Adjustment	-5D~+3D
Slit Width	0mm~14mm adjustable (slit is round when the slit width is 14mm)
Slit Height	1mm~14mm adjustable
Slit Angle	0°~180°adjustable
Slit Inclination	5° 10° 15° 20°
Diameter of Light Spot	Φ14mm,Φ10mm,Φ5mm,Φ2mm,Φ1mm,Φ0.2mm
Filter	Heat Absorption, Grey, Red Free, Cobalt Blue
Input Voltage	AC 220V±22V; AC 110±11V
Electrical Safety Standard	Executive Standard: IEC 601-1, Class I, Type B
Packing Volume	720mm×495mm×480mm
Total Weight	24Kg
Optional Accessories	Applanation Tonometer, Measuring Eye Piece, Trihedron Lens, Gonioscope, Funduscope, Aspheric Lens, Teaching Tube

### SL200 Portable Slit Lamp Microscope



SL200 Slit Lamp is the hand-held slit lamp intended for eye examination of the anterior eye segment, from the cornea epithelium to the posterior capsule. It is used to aid in the diagnosis of diseases or trauma which affect the structural properties of the anterior eye segment.

#### Features

LED light source	One of the brightest, longest lasting lamp available in a Slit Lamp
Magnification	10x and 16x
Slit widths	0.15mm, 0.5mm, 0.8mm and 1.6mm slits, 12mm circle and a 1mm square
Slit length	12mm
Filters	Red free, Blue, Neutral density 0.8 and Clear
Illumination adjustment	Continuously brightness
PD Range	50–72 mm
Angle of convergence	13°
Slit illumination angle	+/- 60°
Battery	Rechargeable Lion battery, 7.4V 1600mAh
Max illumination	50000Lx

**ZUMAX, prices (2025)**

	Order code	name	Price
SL200	438-1000	SL200 HAND-HELD SLIT LAMP	998\$/pcs.
SL260	439-1000	SL260 SLIT LAMP	1800 \$/pcs

code 750500000042, instrument table for SL260 170 \$/ pcs

