



### Multi-functional charging base

The SmartLite® Pro curing light comes with a modern-design charging base with a built-in radiometer and room for extra tips. The intuitive battery management system includes two quick connect batteries for constant availability. The latest generation lithium iron phosphate batteries ensure a full day of clinical operation with only one charge.

## Ordering Information

### 644400 SmartLite® Pro Introductory Kit

1 x Handpiece, 1 x Cure Tip, 1 x Transillumination Tip, 2 x Batteries, 1 x Charging Base, & Accessories

### 644409 SmartLite® Pro Basic Kit

1 x Handpiece, 1 x Cure Tip, 2 x Batteries, 1 x Charging Base, & Accessories

### 644431 SmartLite Pro EndoActivator™ Complete Kit

1 x Handpiece, 1 x EndoActivator Attachment, 2 x Batteries, 1 x Charging Base, & Accessories

### 644432 SmartLite Pro EndoActivator™ Refill Kit

1 x EndoActivator Attachment, 100 x EA Barrier Sleeves, 25 x EA Tips Small, 25 x EA Tips Medium, 25 x EA Tips Medium Long

### Refills

- 644401 SmartLite® Pro Battery
- 644402 SmartLite® Pro Barrier Sleeves (100)
- 644403 SmartLite® Pro Eye Protection Shields (5)
- 644405 SmartLite® Pro Transillumination Tip Refill
- 644406 SmartLite® Pro PolyCure Tip Refill
- 644407 SmartLite® Pro Cure Tip Refill
- 644434 SmartLite Pro EndoActivator™ Barrier Sleeves (100)
- 644435 SmartLite Pro EndoActivator™ Tips Small (25)
- 644436 SmartLite Pro EndoActivator™ Tips Medium (25)
- 644437 SmartLite Pro EndoActivator™ Tips Medium Long (25)

For more information visit [www.dentsplysirona.com](http://www.dentsplysirona.com)

Find us on [www.facebook.com/dentsplysirona.restorative](https://www.facebook.com/dentsplysirona.restorative)

ML440027B  
©2023 Dentsply Sirona. All rights reserved.



SmartLite® Pro  
Modular LED Curing Light

Light, where you need it.



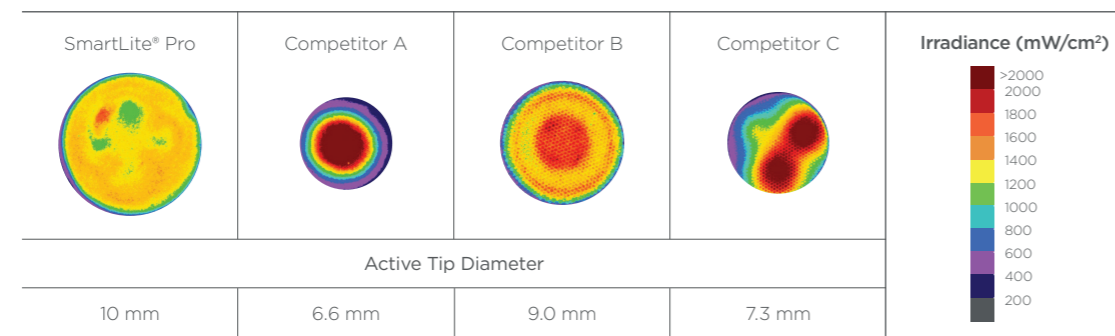
# More than just a curing light

We weren't satisfied with creating one of the most advanced curing lights ever. It had to be one of the best-designed as well. The SmartLite® Pro is a multi-functional modular device in a remarkable, all-metal housing.

## State of the art optics

Optimized 4 LED design provides a homogeneous light distribution over the entire curing area. SmartLite® Pro delivers an average irradiance of 1250 mW/cm<sup>2</sup>

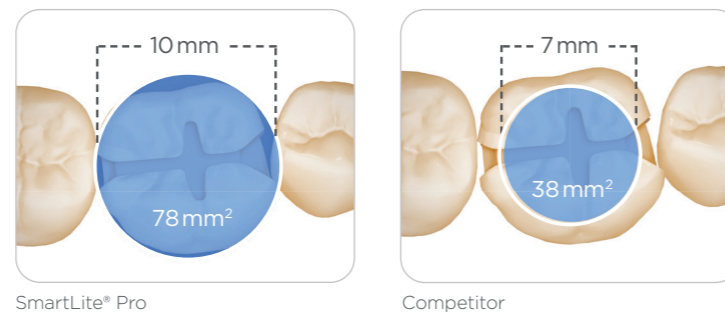
BEAM PROFILES OF FOUR LIGHTS SHOWING THE DISTRIBUTION OF LIGHT EMITTED ACROSS THE LIGHT TIPS<sup>1</sup>



ALL IMAGES TAKEN AT 0 MM DISTANCE FROM THE TIP UNDER IDENTICAL CONDITIONS SHOWING THE UNFILTERED IRRADIANCE DISTRIBUTION OF ALL WAVELENGTHS OF BLUE AND VIOLET LIGHT (350-550 NM).

## Reliable clinical outcomes

Large 10 mm active curing diameter to cover bigger restorations.



Low-profile design and clinically relevant probe length to adequately reach posterior restorations.



## Modular concept

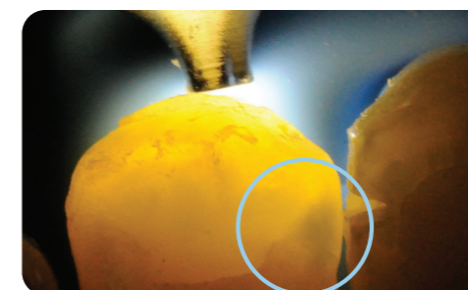
The SmartLite® Pro curing light features a modular design with interchangeable tips for a variety of clinical indications. These quick connect, 360-degree rotational tips are easy to change. The forward-thinking design also allows for the addition of new tips as technology advances in the future.

## Transillumination

The Transillumination Tip is a diagnostic aid that helps visualize interproximal caries, evaluate cracked teeth and illuminate endodontic access. Its sophisticated design includes a 1 mm focused light output with two different settings (anterior and posterior).



Visual Inspection

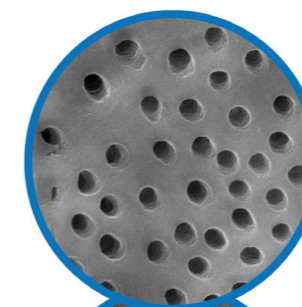


Transillumination

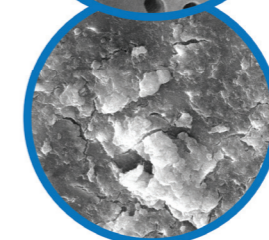
## SmartLite Pro EndoActivator™

Designed for multi-directional movement, the SmartLite Pro EndoActivator™ uses elliptical motion and increased energy for effective irrigant activation.

Activating irrigant solution produces a surface with more opened dentinal tubules, providing better obturation of lateral and accessory canals.<sup>2</sup>



Treated with SmartLite Pro EndoActivator™



Untreated



SmartLite® Pro

1. R. Price (2019). Unpublished commissioned study, data on file. For more information, contact Consumables-Data-Requests@dentsplysirona.com  
 2. G. Kanter V, Weldon E, Nair U, et al. A quantitative and qualitative analysis of ultrasonic versus sonic endodontic systems on canal cleanliness and obturation. Oral Surg Oral Med Oral Pathol Oral Radiol Endod. 2011;112(6):809-813.doi:10.1016/j.tripleo.2011.06.002