

「 Concentration 」



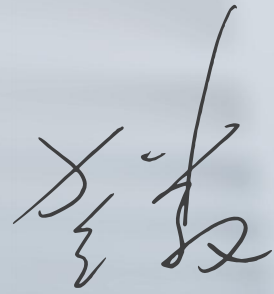
Make dentist's treatment easier



GUANGDONG JINME MEDICAL TECHNOLOGY CO.,LTD  
Tel: +86-757-88777997  
E-mail: info@jinmedental.com  
Http: //www.jinmedental.com  
Address: A15, New Light Source Industrial Base, Nanhai District, Foshan, Guangdong Province, China

Our first concern is not business, but whether the dentist is satisfied with our products.

Every day, we devote to manufacturing products that are safer, more precise and durable for dentists.



President



## 01 Oral surgery

## 02 Esthetic restoration

## 03 Dental implant

## 04 Air-driven high speed handpiece

## 05 Air-driven low speed handpiece

- |                     |   |       |
|---------------------|---|-------|
| <b>1. E8</b>        | Surgical Drive System                       | 01-02 |
| <b>2. ES70/ES90</b> | Surgical Drive System with implant function | 03-04 |
| <b>3. J45</b>       | 45°surgical handpiece                       | 19-20 |

- |                     |   |       |
|---------------------|---|-------|
| <b>1. E8</b>        | Surgical Drive System                       | 01-02 |
| <b>2. ES70/ES90</b> | Surgical Drive System with implant function | 03-04 |
| <b>3. 1:5</b>       | Electric contra angle                       | 05-06 |
| <b>4. 1:1</b>       | External electric motor set                 | 07-10 |
| <b>5. E1</b>        | External electric motor set                 | 07-08 |
| <b>6. EN1</b>       | Internal electric motor set                 | 09-10 |

- |                   |                      |       |
|-------------------|----------------------|-------|
| <b>1. E80/E82</b> | Implant motor        | 11-12 |
| <b>2. 20:1</b>    | Implant Contra angle | 13-14 |

- |                   |  |       |
|-------------------|--|-------|
| <b>1. J6</b>      | Fiber optic handpiece                        | 15-16 |
| <b>2. J5</b>      | Self-luminous zero retraction handpiece      | 17-18 |
| <b>3. J4</b>      | Pedo mini head handpiece                     | 21-22 |
| <b>4. J3 Plus</b> | Zero retraction handpiece with air regulator | 23-24 |
| <b>5. J1</b>      | Bur auto-lock handpiece                      | 25-26 |
| <b>6. J1 Plus</b> | Bur auto-lock handpiece                      | 25-26 |
| <b>7. J7</b>      | Quick coupling handpiece                     | 27-28 |

- |              |   |       |
|--------------|---|-------|
| <b>1. M3</b> | Premium internal water spray low speed set  | 29-30 |
| <b>2. M2</b> | Standard internal water spray low speed set | 31-32 |
| <b>3. M1</b> | External water spray low speed set          | 33-34 |



## Company Profile

Guangdong JINME Medical Technology Co., Ltd. (JINME company) was founded in 2008. With the mission of "Make dentist's treatment easier", we have been focusing on the research, development, manufacture and sales of dental equipment.

Our company now has more than 170 employees and annual R&D investment accounts for more than 10% of business income. Having two invention patents and nearly 30 utility model patents, we continuously launch innovative products, and have been recognized as a National High-tech Enterprise in China.

Guangdong JINME Medical Technology Co., Ltd. now is the vice president unit of Foshan Dental Association, vice-president unit of Foshan Dental Association, the undertaking unit of Foshan High-tech Zone Science and Technology Innovation Industry Promotion Project, and the director unit of Foshan High-tech Zone Senior Talents Association. And we are the first dental handpiece manufacturer in China who has obtained the ISO13485 certificate, CE certificate and FDA certificate in the same time.

In 2016, JINME company won the "Most Valuable Investment Award" in the medical device venture capital circle. In 2017, JINME company reached a strategic cooperation with Essence-DM Capital.

JINME company always take "simple and high efficiency", "provide the best touch", "protect the dentist's hearing" and "reduce the fear of patients" as the direction of research and innovation. Based on user's needs, we launched J3 "constant pressure handpiece", J4 "mini-head dental handpiece for children", J45 "minimal invasion handpiece", J6 "fiber optic handpiece", Internal watercourse low speed handpiece, 20:1 implant handpiece, electrical motor handpiece and other series of precision instruments, highly praised and loved by the market and users.

JINME company headquarters is located in the National Innovation Industry Base -- Guangdong New Light Source Industrial Base. With Foshan as the R&D and operation management center, we established an intensive marketing and after-sales service network. Through more than 50 agents, offices and after-sales service centers around the world, we provide high-quality and fast-response services for global users.



# E8

## Surgical Drive System more understanding in the clinical



Model	E8	Model	Motor Head Configuration
Main system size (excluding water tank)	L260mm x W2408mm x H110mm	Type	No carbon brushes, built-in water spray
Water tank size	L214.8mm x W109.8mm x H81mm	Maximum torque	> 1N · cm
Input voltage	AC 220V	Rotation speed	100-40,000rpm
Range	±10%	Weight	72g
Rated current	0.1A-0.8A	Connection	ISO 3964(Y1012)
Supply frequencies	50Hz/60Hz	Light	LED
Power fuse	2*250V-T1.25AH	Autoclave	Motor head can be sterilized (with protective cap)
Maximum power consumption	180VA	Noise	53dB, Y10836
Cooling water flow at 100%	Above 50ml/min	Size of motor	20mm
Spray gas supply	Above 1.5L/min	Product name	Electric motor
Recommended water and hardness	Hardness of distilled/pure water <6.5mmol/L		
Recommended coolants	Distilled/Pure Water		
Suspended maximum allowable load	≤1.5KG		

Speed ratio	1:4.2	1:1	1:5
Connection	Compatible with all kind of E type connectors	Compatible with all kind of E type connectors	Compatible with all kind of E type connectors
Rotating speed	Maximum 16,800rpm	100rpm-40,000rpm	Maximum 20,000rpm
Weight	74g	71.5g	69.3g
Size of motor	φ9.6 x H14.4 mm	φ9.8 x H14.3 mm	φ10 x H14.4 mm
Noise	≤60dB	≤60dB	≤60dB
Water spray	Triple spray	Single	Triple spray
Light	Fiber optic	Fiber optic	Fiber optic
Chucking type	Push-bottom type	Push-bottom type	Push-bottom type

Model	XTDZ-7-R	XTDZ-8-S	XTDZ-10-O
Drive ratio	3.2:1	4:1	4:1
Stroke angle	1.8mm	3°	17°
Maximum drive speed	40,000min-1	40,000min-1	40,000min-1
Direction of movement	Reciprocating up and down	Reciprocating back and forth, cutting direction parallel to the axis	Reciprocating left and right, cutting direction perpendicular to axis

# ALL IN ONE

-  Tooth Extraction
-  Restorative
-  Tooth Polishing
-  Caries Removal
-  Implant
-  Electric Bone-knife



# ES70/ES90

Surgical Drive System with  
implant function

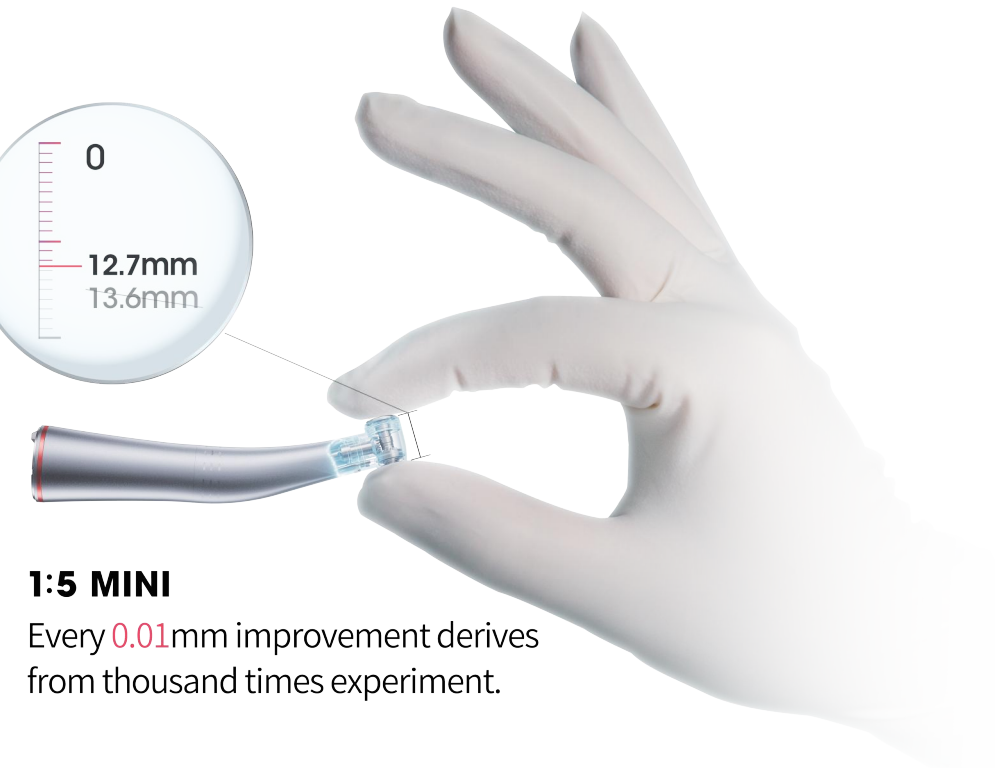


We ensure precise-matching of gears,  
dentists enjoy **perfectly-quiet**,  
**ultra-smooth**, & **long-life** performance.



# 1:5

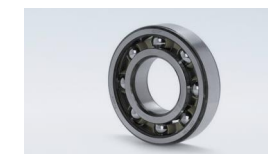
Electric contra angle



## 1:5 MINI

Every **0.01mm** improvement derives  
from thousand times experiment.

6 pcs German bearings



Compact size & high illumination



Speed ratio	1:5
connector	Can be connected to any E-type interface
	electric motor
Speed	Up to 200,000rpm
weight	69.3g
head size	head height 14.4, diameter $\phi$ 10
sound	$\leq$ 60dB
water spray	Triple water spray
light source	optical fiber rod
needle removal method	push type
order number	105019

# E1 External electric motor set



Better than air-driven handpiece

Real-time display of speed provides more accurate treatment



Application	1:1 contra angle	1:5 contra angle
minimum rotation speed	100	500
maximum rotation speed	Up to 40 000	Up to 200 000
silver mercury polishing	✓	
deep caries removal	✓	
decay removal	✓	✓
temporary crown and pontic preparation	✓	
interdental and subgingival polishing	✓	
removal of excess amalgam	✓	✓
cobalt-chromium balance	✓	
fine grinding of cavity preparation	✓	
Retention groove cutting	✓	✓
porcelain adjustment		✓
B+C, bevel and groove preparation fine grinding	✓	✓
cavity, bevel and groove preparation fine grinding	✓	
occlusal surface adjustment		✓
dentin removal	✓	✓

Speed ratio	1:1	1:5
connector	Can be connected to any E-type interface electric motor	Can be connected to any E-type interface electric motor
Speed	100rpm-40,000rpm	Up to 200,000rpm
weight	71.5g	69.3g
head size	head height 14.3, diameter φ9.85	head height 14.4, diameter φ10
sound	≤60dB	≤60dB
water spray	single water spray	Triple water spray
light source	optical fiber rod	optical fiber rod
needle removal method	push type	push type
order number	100003	105019

Type	Brushless, with internal water spray
Maximum torque	>1N·cm
Speed range (portable type)	100-40,000rpm
Weight	72g
Connector	Comply with ISO3964 standard (YY1012)
Fiber optic LED	Adjustable intensity LED fiber optic lighting
Cleaning/sterilization	Can be sterilized with protection cover
Maximum noise level	53dB, in line with ISO11498 (YY 0836) standard
Electric motor diameter	22mm
Order number	106001

Diameter	12mm
Standard length	1.5m
Order number	203209

# EN1 Internal electric motor set



Better than air-driven handpiece

Real-time display of speed provides more accurate treatment



Application	1:1 contra angle	1:5 contra angle
minimum rotation speed	100	500
maximum rotation speed	Up to 40 000	Up to 200 000
silver mercury polishing	✓	
deep caries removal	✓	
decay removal	✓	✓
temporary crown and pontic preparation	✓	
interdental and subgingival polishing	✓	
removal of excess amalgam	✓	✓
cobalt-chromium balance	✓	
fine grinding of cavity preparation	✓	
Retention groove cutting	✓	✓
porcelain adjustment		✓
B+C, bevel and groove preparation fine grinding	✓	✓
cavity, bevel and groove preparation fine grinding	✓	
occlusal surface adjustment		✓
dentin removal	✓	✓

Speed ratio	1:1	1:5
connector	Can be connected to any E-type interface	Can be connected to any E-type interface
	electric motor	electric motor
Speed	100rpm-40,000rpm	Up to 200,000rpm
weight	71.5g	69.3g
head size	head height 14.3, diameter φ9.85	head height 14.4, diameter φ10
sound	≤60dB	≤60dB
water spray	single water spray	Triple water spray
light source	optical fiber rod	optical fiber rod
needle removal method	push type	push type
order number	100003	105019

Type	Brushless, with internal water spray
Maximum torque	>1N·cm
Speed range (portable type)	39,100-40,000rpm
Weight	72g
Connector	Comply with ISO3964 standard (YY1012)
Fiber optic LED	Adjustable intensity LED fiber optic lighting
Cleaning/sterilization	Can be sterilized with protection cover
Maximum noise level	53dB, in line with ISO11498 (YY 0836) standard
Electric motor diameter	22mm
Order number	106001

Diameter	12mm
Standard length	1.5m
Order number	203209



# E80/E82

## Dental Implant Machine

Committed to stress-free healing implant motor



## Technical data

Dental implant machine	E80	E82
Motor with fiber optic	Yes	No
Voltage	220VAC	220VAC
Voltage fluctuation	±10%	±10%
Rated current	0.1-0.8A	0.1-0.8A
Frequency	50/60Hz	50/60Hz
Power fuse	2*250V-T1.25AH	2*250V-T1.25AH
Maximum power consumption	170VA	170VA
Maximum mechanical output power	70W	70W
Motor maximum torque	5.5N·cm	5.5N·cm
Rated voltage range of motor speed range	(100-40,000) r/min	(100-40,000) r/min
Cooling water flow rate at 100%	>90ml/min	>90ml/min
Operation model	S3[3min/10min]	S3[3min/10min]
Packing Size	428mm*328mm*255mm	428mm*328mm*255mm
Net weight/Gross weight[KG]	5.7/7.3	5.7/7.3
Color	White	White
Recommended coolant	Distilled/purified water	Distilled/purified water
Water quality & water hardness range	Distilled/purified water, water hardness<6.5mmol/L	Distilled/purified water, water hardness<6.5mmol/L
Maximum allowable load	≤1.5KG	≤1.5KG

## Usage Guidelines

Programme	P1	P2	P3	P4		P5	
				forward operation	reverse operation	forward operation	reverse operation
Transmission ratio	1:1	20:1	20:1	20:1	20:1	20:1	20:1
Rotation ratio(rpm)	35,000	1,200	800	15	30	20	20
Rotating speed range(rpm)	100-40,000	5-2,000	5-2,000	/	/	/	/
Motor rotating direction	Forward	Forward	Forward	Forward	Reverse	Forward	Reverse
Water Pump	On	On	On	On	Off	On	On
Torque (N·cm)	/	55	55	20	60	20	20
Torque range (N·cm)	/	5-70	5-70	5-70	5-70	20-60	20-60



Durable , Detachable , High torque

# 20:1 Implant Contra angle



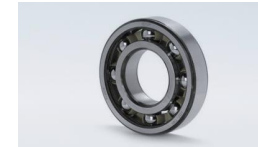
20:1 L



20:1



German ceramic bearing



Removable, easy to clean



High torque, up to 80N · cm



Optic fiber LED



## Specifications

Model	W201L	W201
Product name	20:1 L	20:1
Order code	112032	112036
Rotating speed	Up to 2,000rpm	Up to 2,000rpm
Noise	≤55dB	≤55dB
Light	Fiber optic LED	N/A
Maximum torque	80N · cm	80N · cm
Radial vibration	≤0.05mm	≤0.05mm
Water spray	Internal and external cooling	Internal and external cooling
Chucking type	Push-button type	Push-button type
Cartridge	Exposed cartridge	Exposed cartridge
Bearing	German bearings	German bearings
Autoclave	Can be sterilized no more than 135 °C	Can be sterilized no more than 135 °C
Connection	E-type connector with fiber optic	Standard E-type connector



Dr. Michel Rechtman  
Paris, France

I work 5 days a week in different offices in France,  
I need to be able to rely on my equipment,  
That is why I choose JINME dental.

# J6 Fiber optic handpiece



Consistant electric current flow



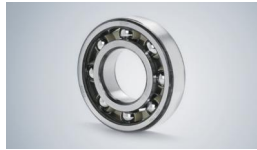
Polarity-free



Only 46g in weight



German ceramic bearings



Specifications

Model	TU
Product name	J6
Order code	103093
Working pressure	0.28MPa-0.30MPa
Rotating speed	330,000rpm-380,000rpm
Noise	≤60dB
Atomized water pressure	0.3-0.35MPa
Working water pressure	0.2-0.23MPa
Water flow	90mL/min-110mL/min
Radial vibration	≤0.03mm
Surface	Titanium plating
Water spray	Triple spray
Chucking type	Push-button type
Cartidge	Exposed cartridge
Bearing	German ceramic bearing
Autoclave	Can be sterilized no more than 135 °C
Connection	6 holes coupling(M6) compatible with KaVo and NSK

Self-owned patent in zero retraction,  
not only keeps away from cross-infection,  
but also prolongs service life,  
along with easy maintenance.



# J5 Self-luminous (LED) handpiece



100% zero retraction  
prevents cross-infection,  
extends durability



SMD LED  
Strong and durable



German ceramic bearing



Triple water spray, sufficient  
cooling effect



## Specifications

Model	TUQP
Product name	J5
Order code	103092
Working pressure	0.28MPa-0.30MPa
Rotating speed	300,000rpm-360,000rpm
Noise	≤60dB
Atomized water pressure	0.3-0.35MPa
Working water pressure	0.2-0.23MPa
Water flow	90mL/min-110mL/min
Radial vibration	≤0.03mm
Surface	Titanium plating
Water spray	Triple spray
Chucking type	Push-button type
Cartridge	Exposed cartridge
Bearing	German ceramic bearing
Autoclave	Can be sterilized no more than 135 °C
Light	with generator
Brightness	18,000 Lux
Color temperature	5,500K - 6,000K
Connection	2 holes (Borden)/4 holes (Midwest) coupling
Connection (optional)	2 holes/4 holes quick coupling compatible with NSK

# 45°

Excellent accessibility and visibility. Especially suitable for the minimal invasive removal of wisdom teeth.

J45's unique 100% rear-exhaustion can completely avoid emphysema which causes pain and infection to patients.

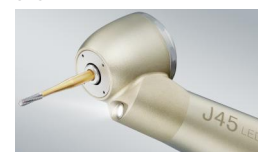
Equipped with 25mm long bur, every little vibration will be amplified, and could eventually lead to bur fracture. J45's minimized vibration greatly enhances the bur's durability, and reduces patient's pain.



# J45 Surgical handpiece



J45 LED



J45



100% rear-exhaustion



Sufficient cooling effect



25mm long shank carbide bur



Minimal vibration



## Specifications

Model	45-TUP	45-TU
Product name	J45-LED	J45
Order code	100073(4 holes)/100076(2 holes)	100070
Working pressure	0.25MPa-0.3MPa	0.25MPa-0.3MPa
Rotating speed	32,000rpm-350,000rpm	360,000rpm-420,000rpm
Noise	≤60dB	≤60dB
Working water pressure	0.2-0.23MPa	0.2-0.23MPa
Water flow	90mL/min-110mL/min	90mL/min-110mL/min
Radial vibration	≤0.03mm	≤0.03mm
Surface	Titanium plating	Titanium plating
Water spray	Triple spray	Single spray
Chucking type	Push-button type	Push-button type
Cartidge	Exposed cartridge	Exposed cartridge
Bearing	German ceramic bearing	German ceramic bearing
Autoclave	Can be sterilized no more than 135 °C	Can be sterilized no more than 135 °C
Light	Build-in LED	N/A
Brightness	18,000 Lux	N/A
Color temperature	5,500K - 6,000K	N/A
Connection	2 holes (Borden)/4 holes (Midwest) coupling	2 holes (Borden)/4 holes (Midwest) coupling



# J4

Mini head dental handpiece  
for children



J4 Mini head dental handpiece  
for children



Standard dental handpiece



**8.9mm** Extraordinary miniature head

Every dentist deserves to have a piece of mini head dental handpiece for children -- J4

#### Specifications

Model	MUQ
Product name	J4
Order code	100068(4 holes)/100071(2 holes)
Working pressure	0.23MPa-0.25MPa
Rotating speed	380,000rpm-450,000rpm
Noise	≤60dB
Atomized water pressure	0.3-0.35MPa
Working water pressure	0.2-0.23MPa
Water flow	90mL/min-110mL/min
Radial vibration	≤0.03mm
Surface	Titanium plating
Water spray	Single
Chucking type	Push-button type
Cartridge	Exposed cartridge
Bearing	German ceramic bearing
Autoclave	Can be sterilized no more than 135 °C
Connection	2 holes/4 holes quick coupling compatible with NSK



100% zero retraction  
Prevent cross infection.

# J3 Plus

Zero retraction handpiece with air regulator



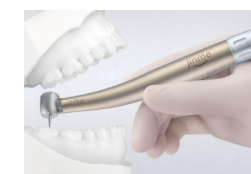
100% zero retraction prevents cross-infection, extends durability



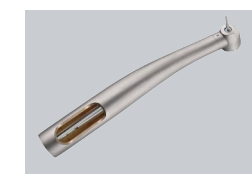
Integrated stainless steel, strong head design



Standard head size, flexible accessibility



Air pressure regulator, worry-free in air flow input



Items	parameter
Product model	SU
Product code	J3 Plus
Chuck type	Push button
Cartridge	Exposed type
Adaptor	Fixed four holes(M4)/B2
Bur	ISO1797-1 φ1.6
Working pressure	0.23 (MPa)-0.25 (MPa)
Rotating speed	340,000 (rpm) -370,000 (rpm)
Working water pressure	0.2 (MPa)-0.23 (MPa)
Water flow	90-120(ml/min)
Water spray	Triple water spray
Atomizing water pressure	0.3 (MPa)-0.35 (MPa)
Noise	≤60dB
Head diameter	Φ11.2mm
Head height	13.45mm
Surface	Titanium coating
Bearing	German ceramic bearing

Patented auto-lock bur chucking system  
 The bur is firmly held once rotation begins.  
 Worry-free in medical accident as bur is secured by unique design.



# J1 / J1 Plus

## Bur auto-lock handpiece



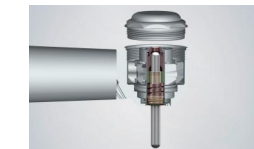
Triple water spray (seperated water and air)



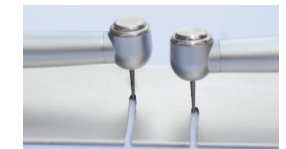
Push-button type



The global unique patent technology



Super torque cutting



J1 Plus



J1



Specifications

Model	TU	TU
Product name	J1 Plus	J1
Order code	101110(4 holes)/101111(2 holes)	101112(4 holes)/101116(2 holes)
Working pressure	0.28MPa-0.30MPa	0.28MPa-0.30MPa
Rotating speed	350,000rpm-370,000rpm	300,000rpm-340,000rpm
Noise	≤60dB	≤60dB
Atomized water pressure	0.3-0.35MPa	0.3-0.35MPa
Working water pressure	0.2-0.23MPa	0.2-0.23MPa
Water flow	90mL/min-110mL/min	90mL/min-110mL/min
Radial vibration	≤0.03mm	≤0.03mm
Surface	Titanium plating	Chrome plating
Water spray	Triple spray	Single spray
Chucking type	Push-button type	Push-button type
Cartidge	Exposed cartidge	Exposed cartidge
Bearing	Imported ceramic bearing	Imported ceramic bearing
Autoclave	Can be sterilized no more than 135 °C	Can be sterilized no more than 135 °C
Connection	2 holes (Borden)/4 holes (Midwest) coupling	2 holes (Borden)/4 holes (Midwest) coupling



# J7 Quick Coupling Handpiece



Zero-retraction system



German bearings



360° swivel



Sufficient cooling effect



## Specifications

Model	SUQ
Product name	J7
Order code	100072
Working pressure	0.23MPa-0.25MPa
Rotating speed	350,000rpm-380,000rpm
Noise	≤60dB
Atomized water pressure	0.3MPa
Working water pressure	0.2-0.23 MPa
Water flow	90mL/min-110mL/min
Radial vibration	≤0.03mm
Surface	Titanium coating
Water spray	Triple spray
Chucking type	Push-button type
Cartridge	Exposed cartridge
Bearing	German ceramic bearing
Autoclave	Can be sterilized no more than 135 °C
Connection	2 holes/4 holes quick coupling compatible with NSK

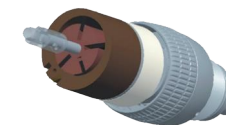


Elegant, Lower Noise, Comfortable than ever

# M3 Premium internal water spray low speed set



Self-lubricating system



Low weight design



Light Weight Design: only 188g



Push button type



## Specification

Model	M3-LN
Order code	102022
Working air pressure	0.28MPa-0.3MPa
Rotating speed	18,000-20,000rpm
Noise	≤65dB
Atomizing air pressure	0.3MPa
Working water pressure	0.2MPa
Water flow	90mL/min-110mL/min
Water spraying type	Internal water spraying
Chuck type	Push button type for contra angle,Tension-ring locking type for straight handpiece
Bearings	Ceramic bearings
Sterilization	Can withstand high temperature and high pressure ,Steam sterilization not exceeding ≤135°C degrees
Connection:	4 holes or 2 holes

# M2

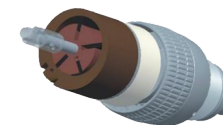
Standard internal water spray low speed set



Accurate spraying, comfortable grip,  
no extra installation is needed.



Self-lubricating system



Push button type



Water spray



Accurate spraying angle



### Specifications

Model	LN
Product name	M2
Order code	102013
Working pressure	0.28MPa-0.3MPa
Rotating speed	18,000-20,000rpm
Noise	≤65dB
Atomized water pressure	0.3-0.35MPa
Working water pressure	0.2-0.23MPa
Water flow	90-110ml/min
Surface	chrome plating
Water spray	Internal water spray
Chucking type	push button type for contra angle, tension ring for straight head
Bearing	ceramic bearing
Autoclave	Can be sterilized no more than 135 °C
Connection	2 holes (Borden)/4 holes (Midwest) coupling

# M1

## External water spray low speed set



### Specifications

Model	L
Product name	M1 1:1 low speed air motor
Order code	101021
Working pressure	0.28MPa-0.3MPa
Rotating speed	18,000-20,000rpm
Noise	≤65dB
Atomized water pressure	0.3-0.35MPa
Working water pressure	0.2-0.23MPa
Water flow	90mL/min-110mL/min
Surface	Chrome plating
Water spray	External water spray
Autoclave	Can be sterilized no more than 135 °C
Connection	2 holes (Borden)/4 holes (Midwest) coupling



Model	M1 1:1 low speed straight handpiece
Weight	50g
Length	85mm
Head diameter	20mm
Bur size	Φ2.35mm surgical bur (ISO1797-1)
Noise	≤65dB
Chucking type	Latch type for straight piece
Surface	Chrome plating



Model	M1 1:1 low speed contra angle
Weight	44g
Head height	13mm
Head diameter	8mm
Bur size	Φ2.35mm surgical bur (ISO1797-1)
Noise	≤65dB
Chucking type	Latch type
Surface	Chrome plating