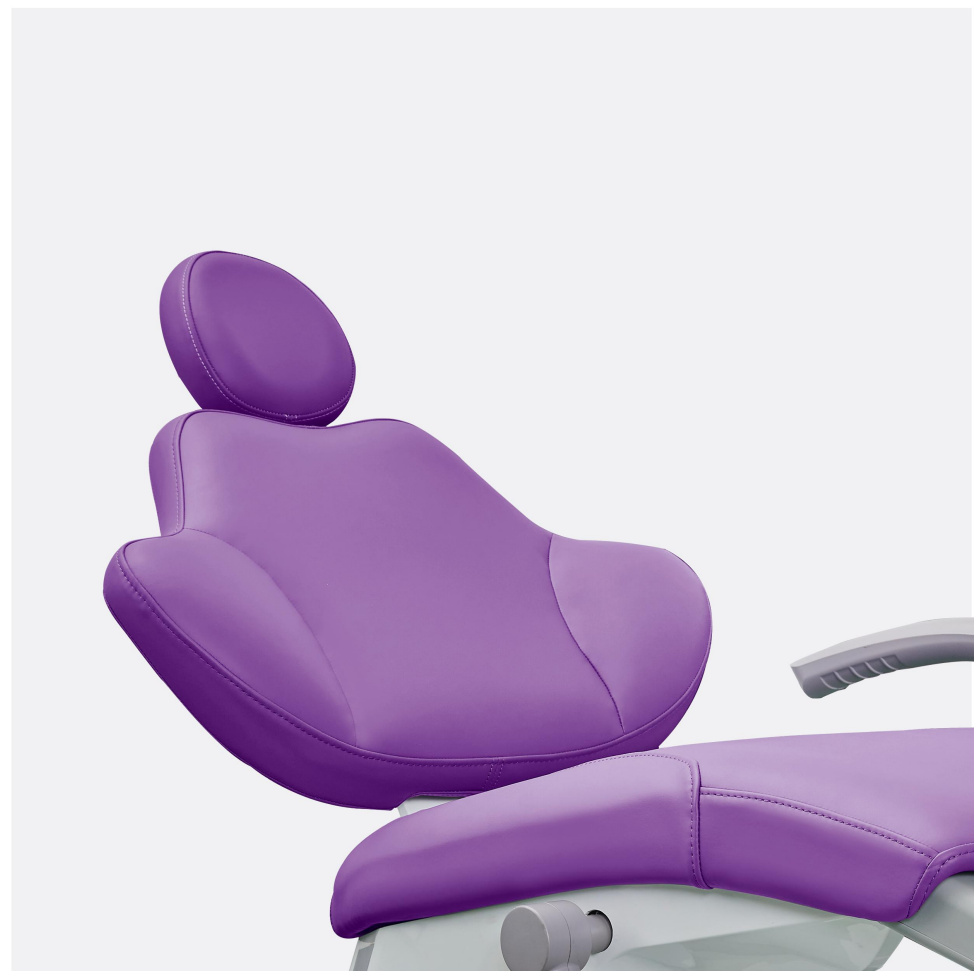


# ESAY-A5



X9  
SERIES  
Intelligent Dental Chair



Produced by  
FOSHAN CINGOL MEDICAL INSTRUMENT CO.,LTD  
Tel:+86-757-81797099  
Email: cingol@cingol.com  
Web:www.esaydent.com  
Add: Building 6-1, Nansha Industrial Village,  
Jiangli North Rd, Danzao Town,  
Nanhai District, Foshan ,Guangdong,China.

## Intelligent Voice Control

ESAY dental chair has a built-in Intelligent Voice Control Operating System, it enables dentists to control the most often used functions by voice command. Dentist could activate the dental chair by saying "Hey ESAY", the chair will respond with "Hello there", then dentist could control the appointed often used function by voice recognition commands.



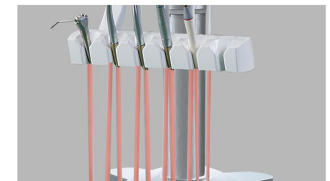


## More treatment flexibility contribute to smooth workflows

Cart type dental chair creates more possibilities for treatment .

### Cart type A5

- Super-low initial position up to 39-40cm.
- Dentist is able to adjust the cart height for optimal treatment position.
- Temperature adjustable water for all tubes: 3-way syringe, handpiece tubes and scaler.



- Cart type: electric height adjustment, silent wheels with brake.



## Flexible for Optimal Operation

Simplified European type top-mounted instrument tray, not simple.

### Top-mounted A5

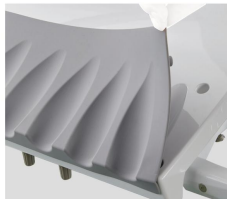
- 6 flexible whip arms, makes every step of treatment work with ease, full-fill your professional request.
- The intuitive instrument tray on the dentist side, providing a wider range of treatment situations, easy for you to control the patient chair and instrument functions with fingertip.



Multi-functional dentist panel.



Rotatable instrument tray with big room for dentists.



Featured with silicone pad and extra tray for instrument use.



**Clean up position** " C ", helpful to clean rapidly and prepare for next surgery.

**Emergency position** " + ", to avoid risks during surgery, it helps dentist to save the patient's life in the shortest time when the emergency happens.



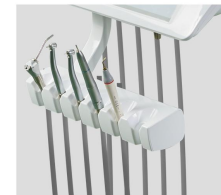
## Flexible design

Multi-functional dentist panel;

Conveniently placing and grabbing instruments from the racks.



9 memory patient chair positions



135 degrees rotatable instrument rack



Adjustable water knob

## Ergonomic Upholstery

Skin-friendly cushion with ergonomic design and high elastic memory foam, provides a comfortable lying experience.

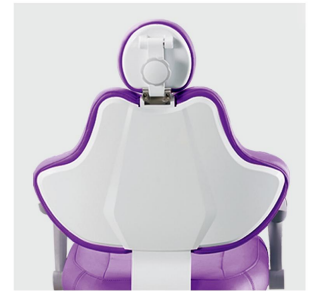


Imported wear-resistant leather



·Soft, breathable and durable

Wing shape backrest



·Unique designed ultra-thin backrest makes dentist get closer to patient.

Skidproof armrest with buffer



·Provides a stable feeling of holding ,and avoids noise impact.

3-axis headrest



·Multi-joint headrest enable dentists to adjust the headrest to satisfy different use application.



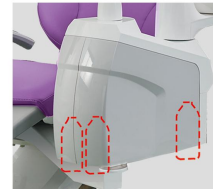
Rotatable connection pole for sidebox,  
makes the dental chair more stable.



180 degrees rotatable ceramic cuspidor.



Double seal ring connector, well sealed;  
Reinforced filter, durable and easy to clean.



Built-in 3 distilled water bottles  
convenient for daily surgery  
and disinfection use.



Multi-functional assistant tray.



Multi-functional foot pedal with  
corrugated stainless steel pipe.



6 directions adjustable dentist stool  
with skin-friendly fibre leather,  
easy to use and maintain.



### Options

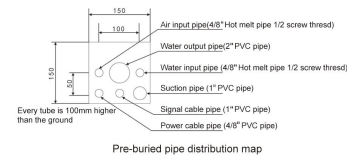
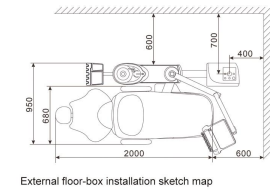
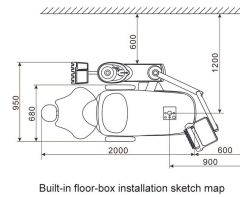


### T.MASTER LED operating light

- The T.MASTER LED operating light can be rotated freely at different angles to ensure perfect illumination, it also provides different brightness according to the clinical needs. The maximum light intensity is 25,000 lux.
- Featured PIR sensor, easily control on and off, and adjust the luminous intensity by sensor.
- The sealed front protective cover is easy to clean and the detachable lamp handles are easy to replace and clean.

### Specification

◇ Colour Options ————— > Popular colours ★★★★★



Input voltage: 230V ± 10%, 50Hz  
 Water pressure: 0.2-0.4Mpa/2.0-4.0 bar  
 Air pressure: 0.55-0.8Mpa/5.5-8.0 bar  
 Gross weight: 190KG