

# User Manual

## **A3M-X (LAN Storage) Digital Intraoral Camera**



**Thank you for using our product, it will bring you a different experience.  
Please read the details of the instruction before installing and using the product.**

## Feature

- ◆ Support LAN storage or TF card storage.
- ◆ High definition, Macro lens with glass seal, Medical special.
- ◆ The dentist can pay more attention to the patient with the auto-focus techniques.
- ◆ High-definition lossless image transmission patent technique.
- ◆ 17 inch display Medical special
- ◆ Multiple display patterns: full screen, freeze-frame, four split screen, double-screens comparison.
- ◆ 10 LED with standard 5500k color temperature to fill light. Support LED lights off.
- ◆ The handle is designed with food grade material, and structure is more ergonomical.

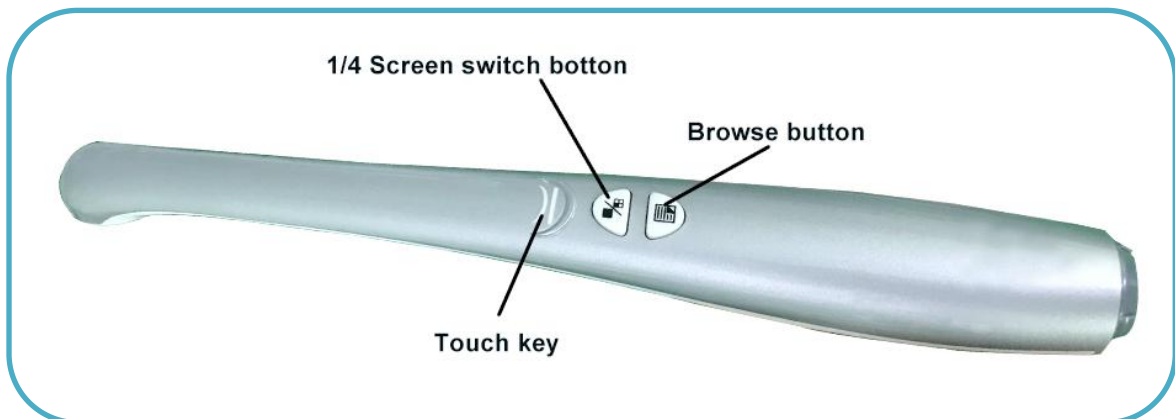
## Specification

Name	A3M-X Dental Intraoral Camera
Power Supply	220V
Input Power	4.5VA~5.5VA
Camera Lens Auto Focus	15 mm ~ 30 mm
Operating Range	18mm ~ 25mm
Cable Length	3.5 M
Handle Wire length	2 M
Image Format	JPEG
View Angles	62 degrees
Imaging Sensor	1/4 CMOS sensor
Resolution	1280*1024
Display Screen	17 inch medical display
Camera Lens	high definition macro lens with glass seal
Backlight	10 LEDs ; Support lights off
Handle Button	Capture by touching & function silicone keypad

## Spare Part List

<p>Display Screen</p>		<p>Handle bracket &amp; bracket screw</p>	
<p>Handle</p>		<p>Remote Control</p>	
<p>Handle Wire</p>		<p>SD card</p>	
<p>220V Power  (Optional)</p>		<p>TF card reader</p>	
<p>24V Power</p>		<p>Protect Sheath (50pcs)</p>	

## Handle



### 1、 Power on and start up automatically

Enter the start up screen with 10s,then enter full-screen preview

### 2、 Touch key

- 1) Click the **Touch key**, then the picture freeze-frame
- 2) Click again the **Touch key**,the picture will be saved to the directory on computer or TF card,and then back to full-screen preview automatically.
- 3) When the picture freeze-frame, press **1/4 Screen switch button**, then into double-screens comparison. Exit the mode by long press **Browse button**.
- 4) When the picture freeze-frame, press **Browse button**,Cancel the freeze-frame

### 3、 1/4 Screen switch button

- 1) Enter full-screen preview,press **1/4 Screen switch button** into four split screen mode,and then click **Touch key** continuously to take picture
- 2) In four split screen mode,press **1/4 Screen switch button**, and then back to full-screen preview.

### 4、 Browse button

- 1) Enter full-screen preview,press **Browse button**, then into picture browsing mode.

- 2) In picture browsing mode,press **1/4 Screen switch button** to check previous image; press **Browse button** to check next picture.
- 3) In picture browsing mode,long press **1/4 Screen switch button**,loosen the button, and than press **1/4 Screen switch button** to delete the current picture.
- 4) In picture browsing mode, long press **Browse button**, back to full-screen preview.

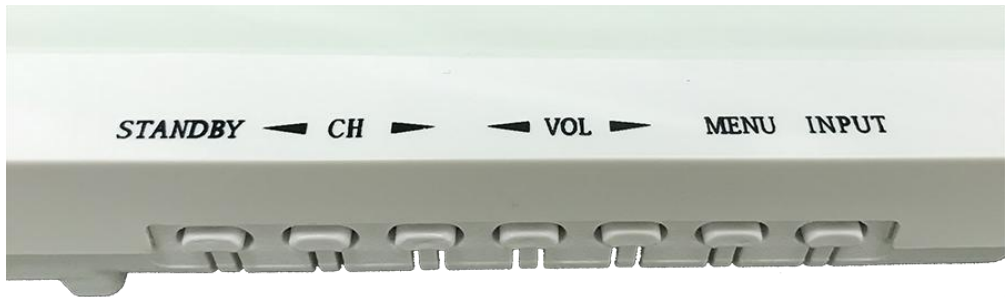
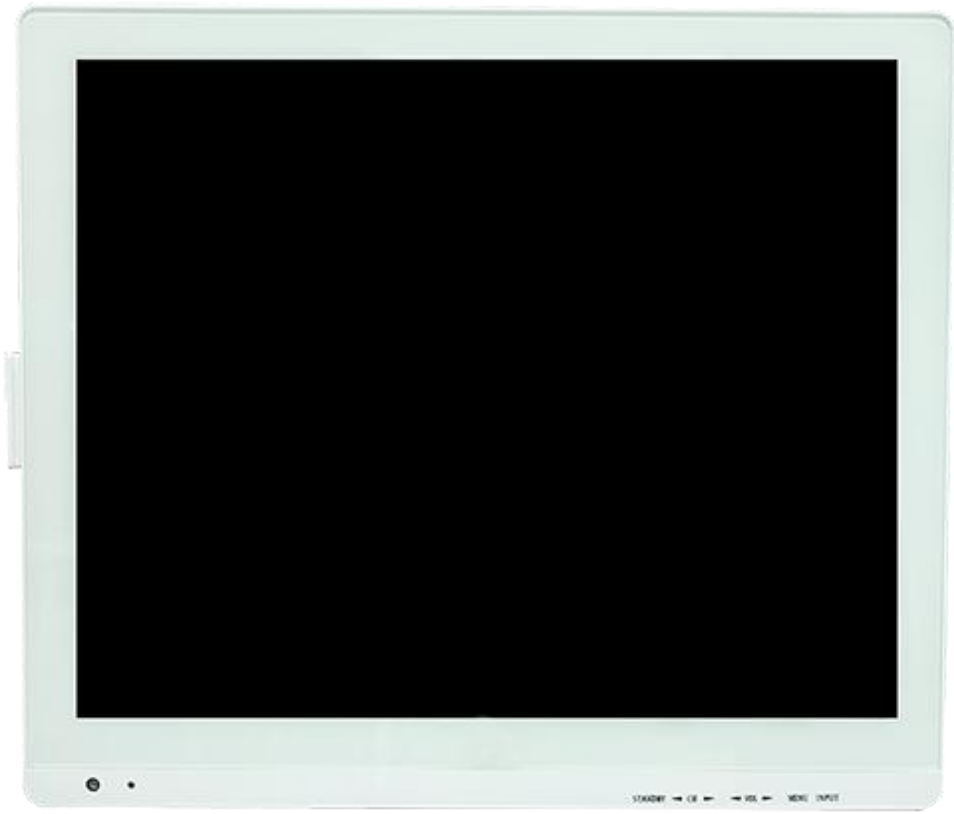
#### 5、 Control Camera's LED (ON & OFF)

In full-screen preview mode, long press **Browse button**, LED OFF, long press **Browse button** again, LED ON

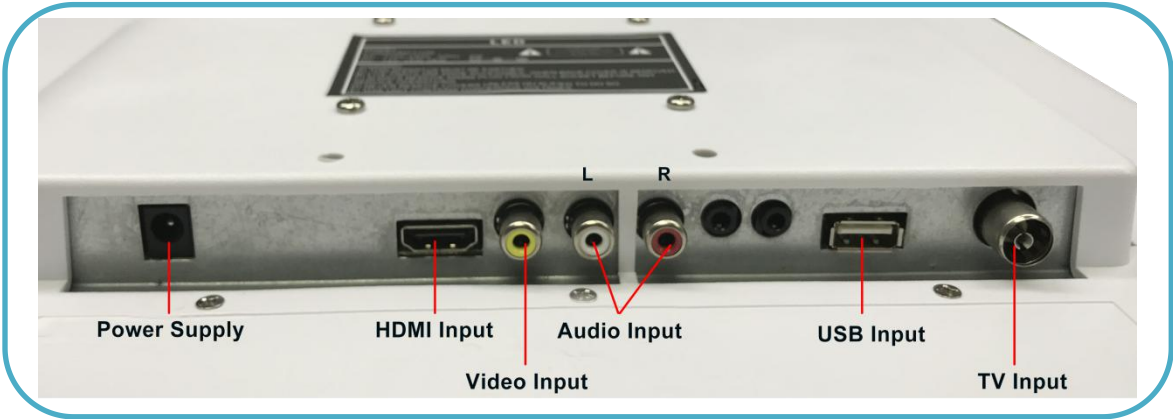
- 6、 Put the handle into the bracket,camera hibernate automatically. Take away the handle from bracket,the camera back to work automatically.
- 7、 Within 5 min, without any operation by camera,also not put the handle into the bracket,camera hibernate automatically. Press any button back to work.
- 8、 The best distance of shooting is 2cm.Full screen with 2~4 teeth is clearest.

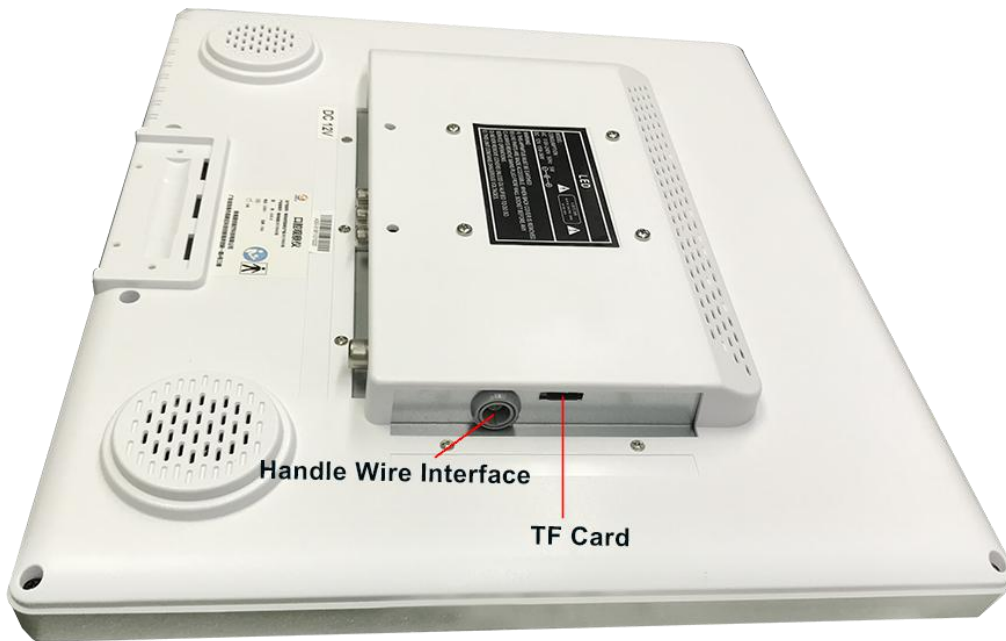


**17 inch Display Screen (Front)**

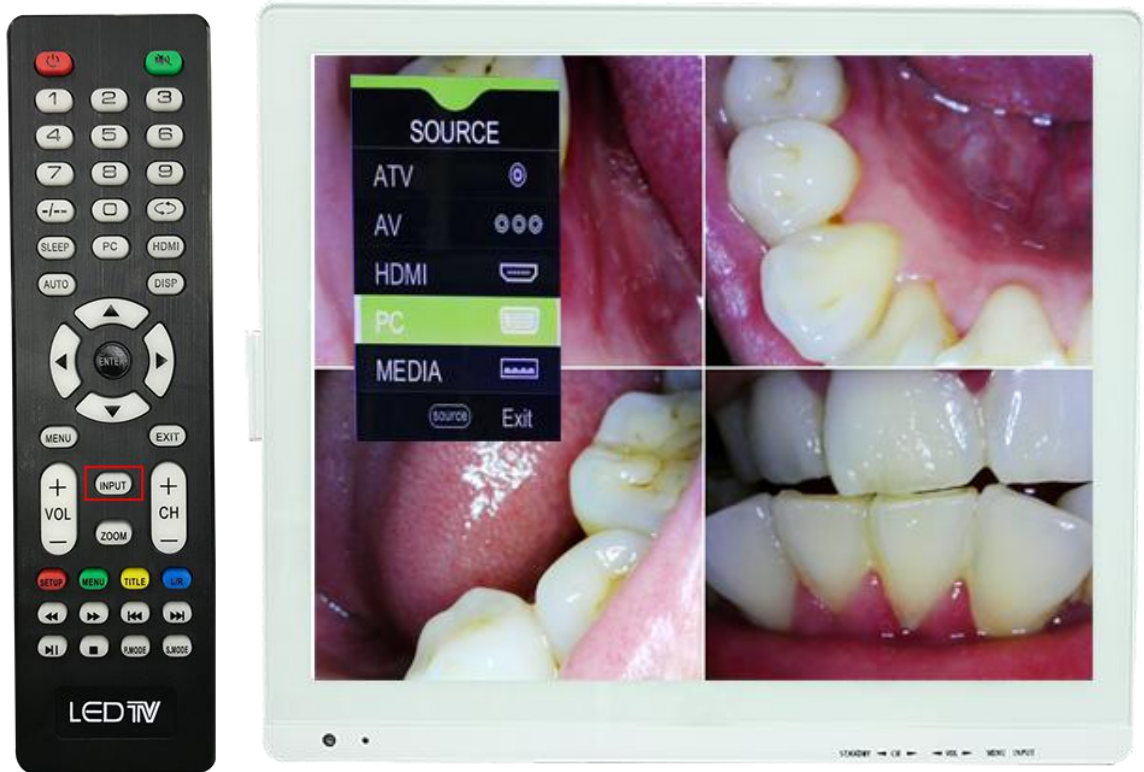


**17 inch Display Screen (Back)**





## How to Watch Video

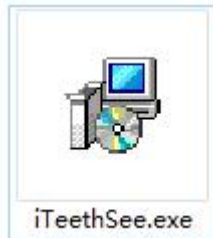


\* Watch Video in USB or TF card: **INPUT**→**MEDIA**

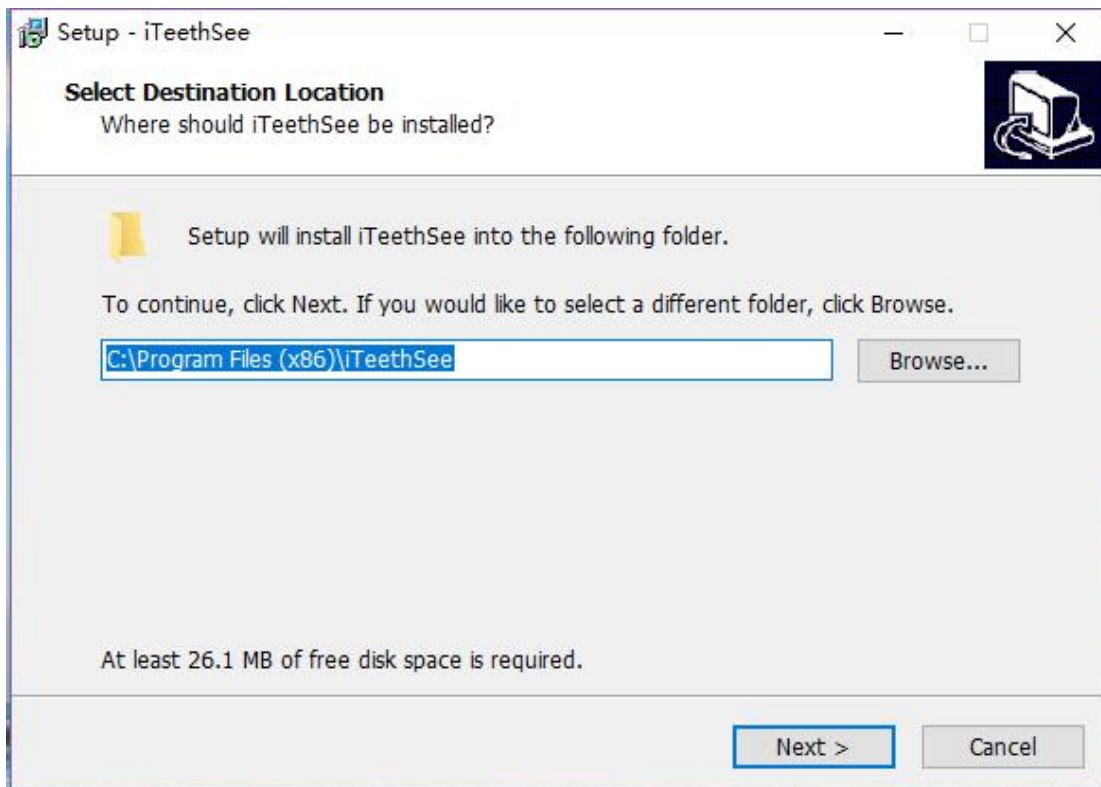
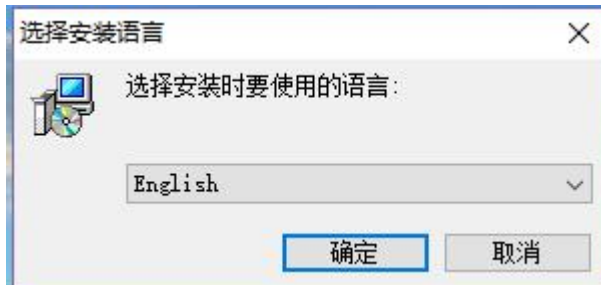
\* Back to intraoral camera : **INPUT**→**PC**

## Software Installation

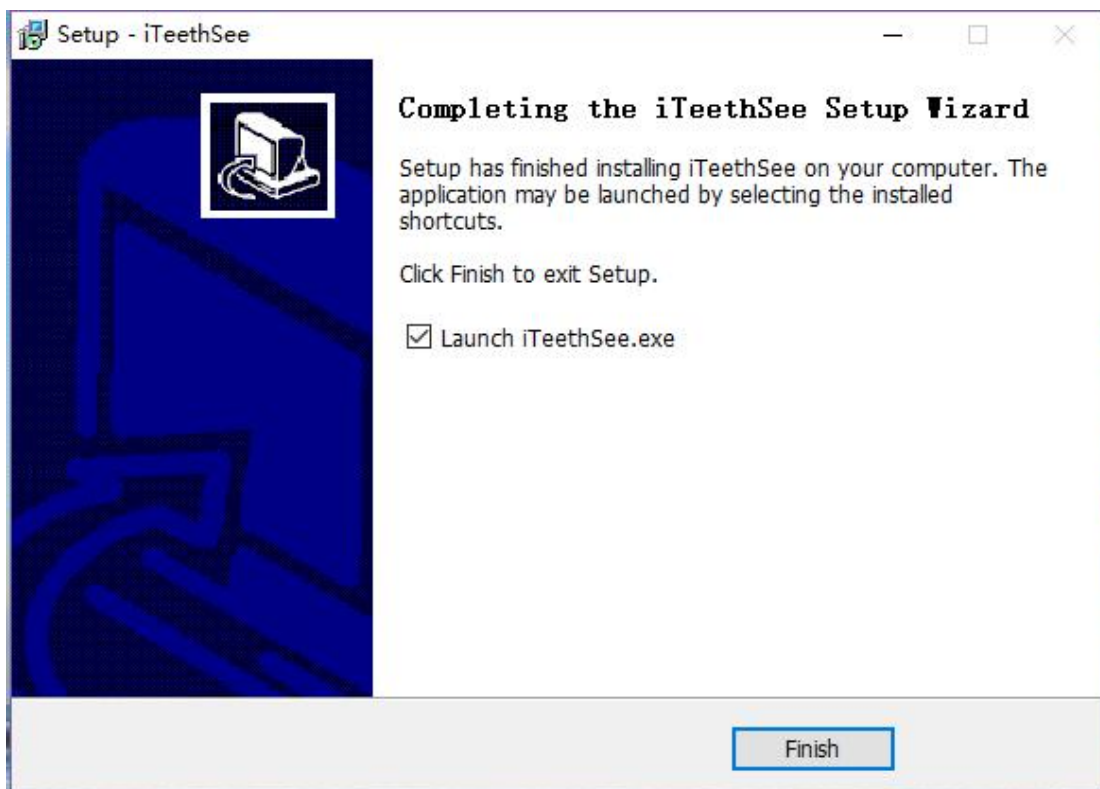
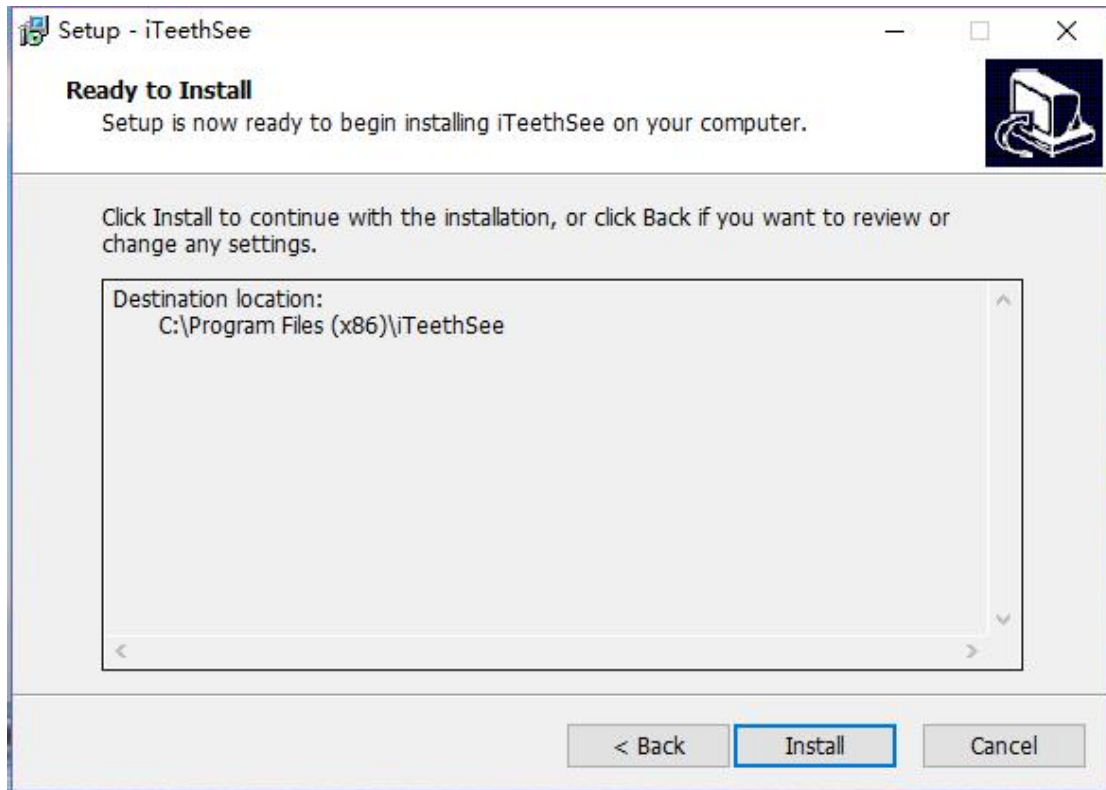
1. Double - click iTeethSee.exe to install according to the prompt



2. Choose the language "English"



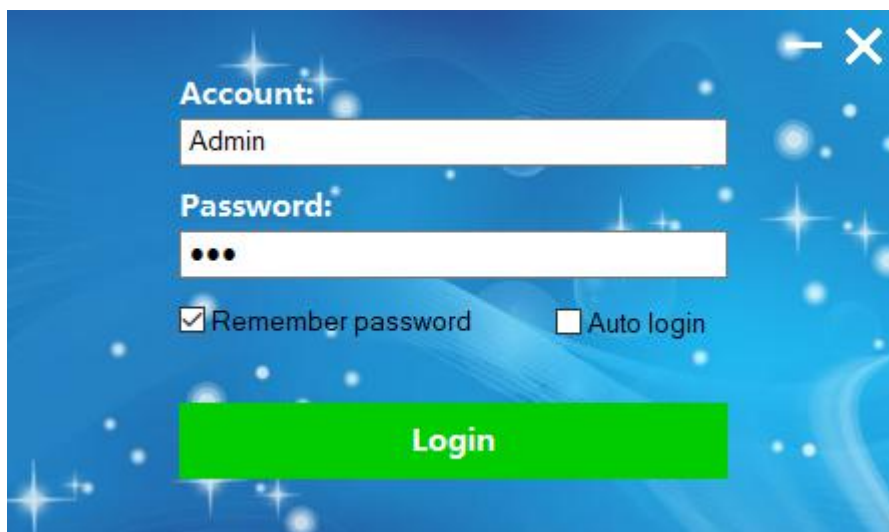




3. Fish installation.

4. Open the software, Account and password is the defaults.

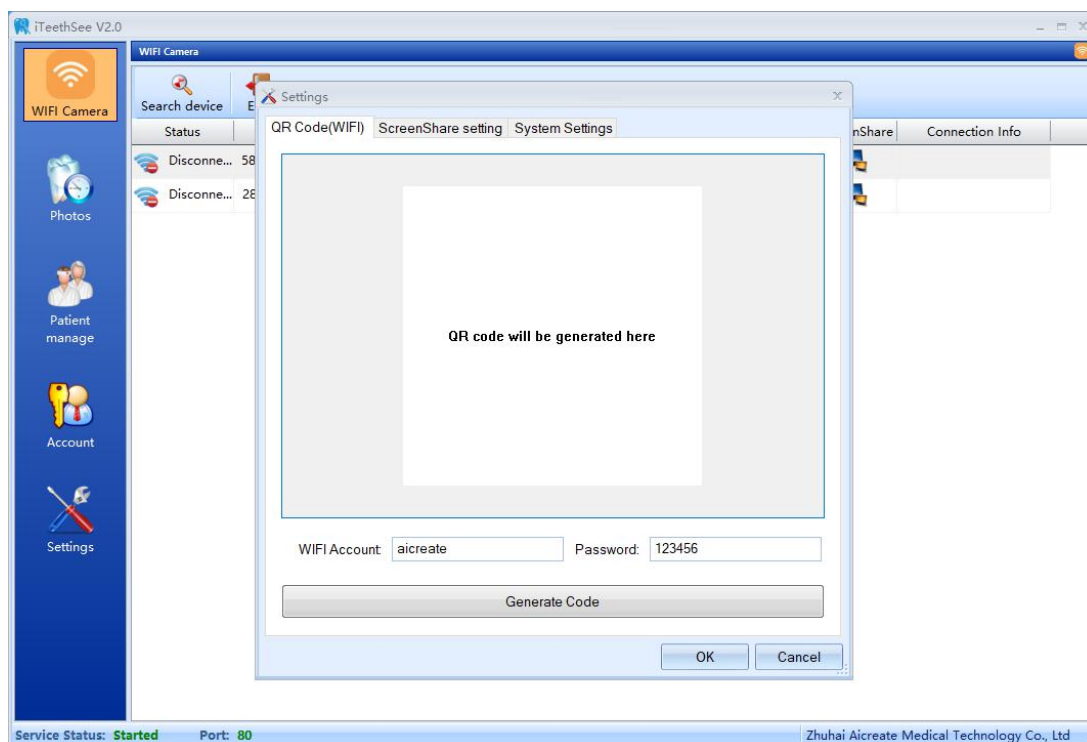
Account: Admin Password: 123



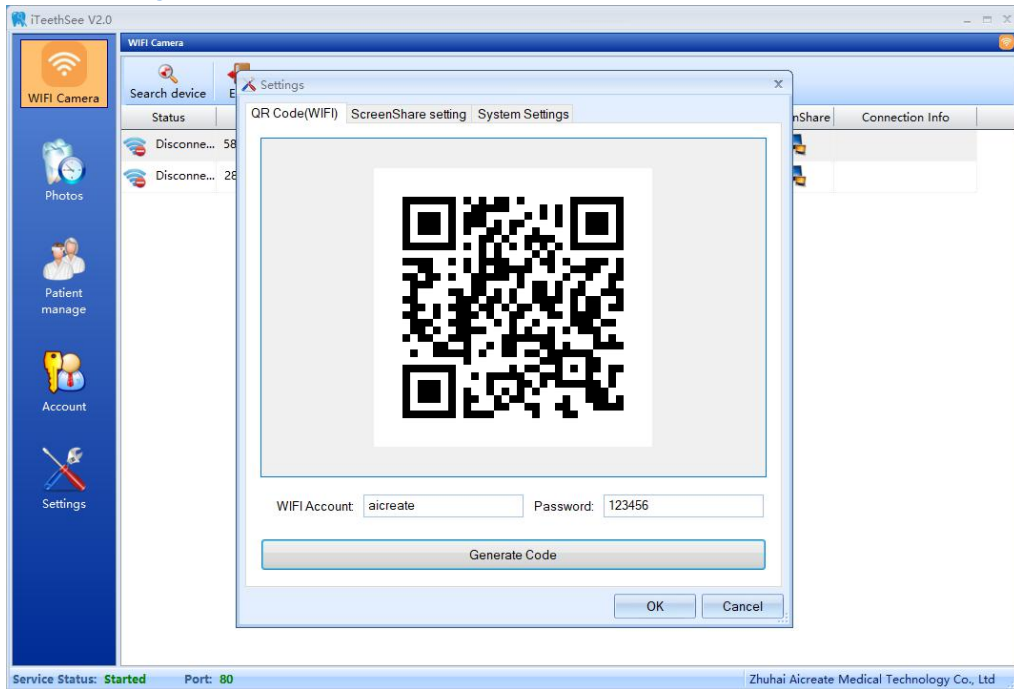
## Connect WIFI & Usage

### Intraoral Camera Connect WIFI

1) Settings --- QR(WIFI) --- Set up the WIFI Account and Password (The same LAN of your own computer) --- OK

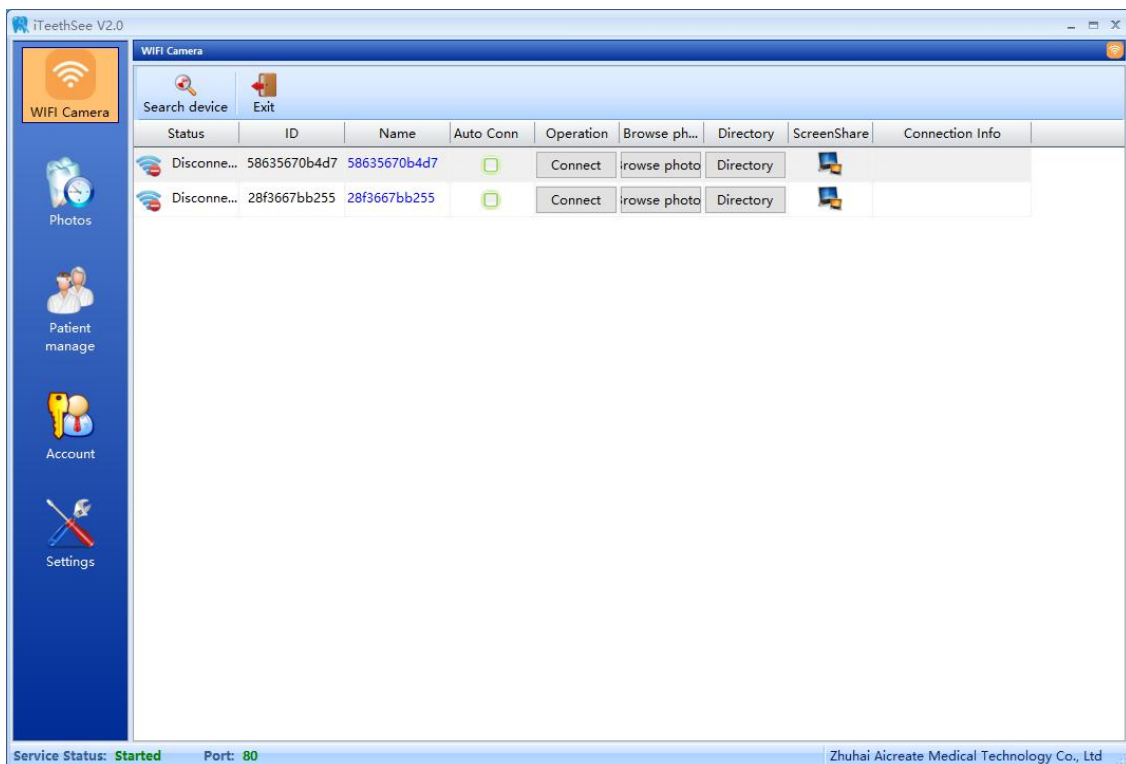


- 2) Use the handle , enter full-screen preview, long press **1/4 Screen switch button** to scan the QR code. Wait for a moment,the camera will show **“Connect WIFI successfully”**.



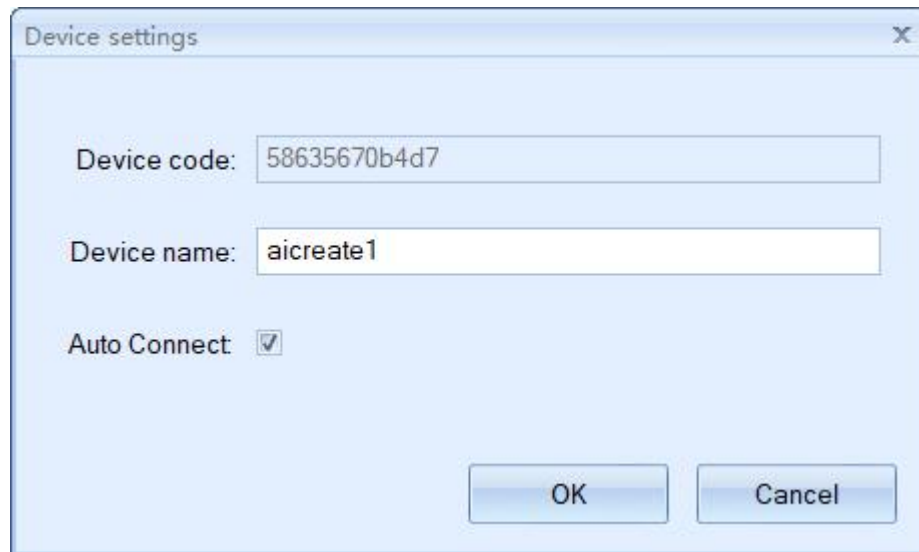
### How to Search Intraoral Camera?

Open the software,the computer will search all intraoral camera that in the same LAN. One computer can connect several intraoral camera. Or you can click “Search device” to search the camera.

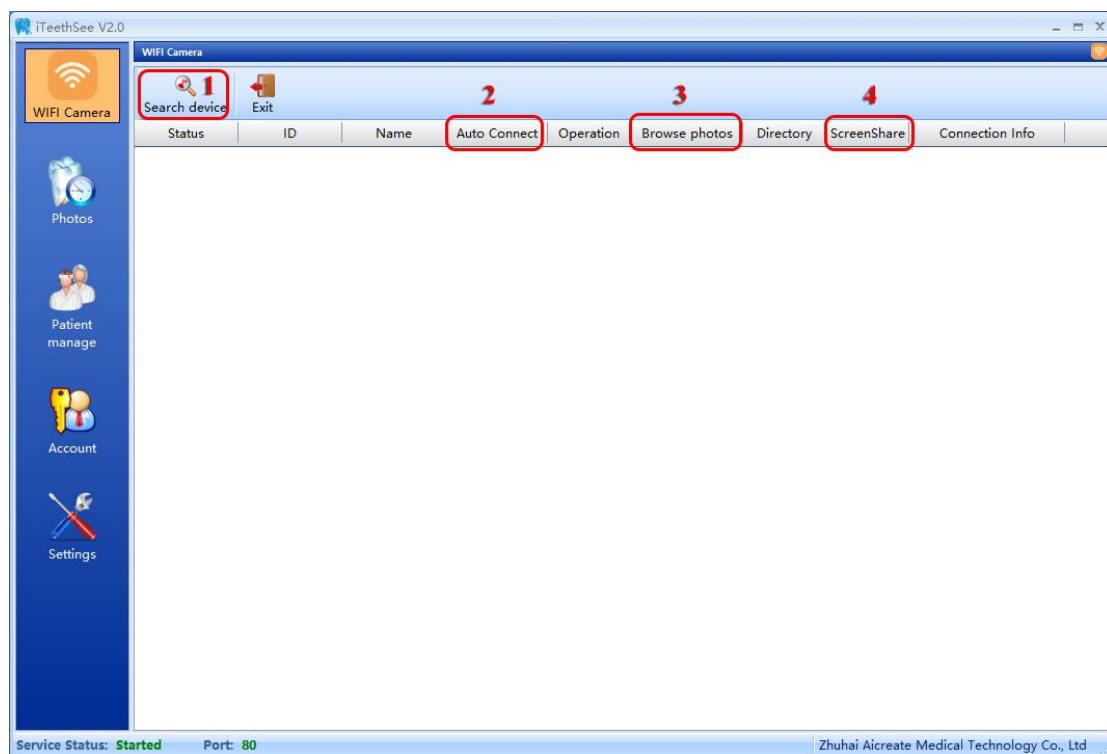


## Set the name of the Intraoral Camera

Click the name of the Intraoral Camera. You can modify the name of the Intraoral Camera. The pop-up page is as follows:



## Details of other functions



1. **Search device:** Search intraoral camera
2. **Auto Connect:** Connect the intraoral camera with company automatically when you log in next time.
3. **Browse photos:** Browse the teeth photos that have be saved.
4. **Screen Share:** Share the pictures in computer to intraoral camera.