

# User Manual

**A3M (LAN Storage)  
Digital Intra-oral Camera**



**Thank you for using our product, it will bring you a different experience.  
Please read the details of the instruction before installing and using the product.**

## Feature

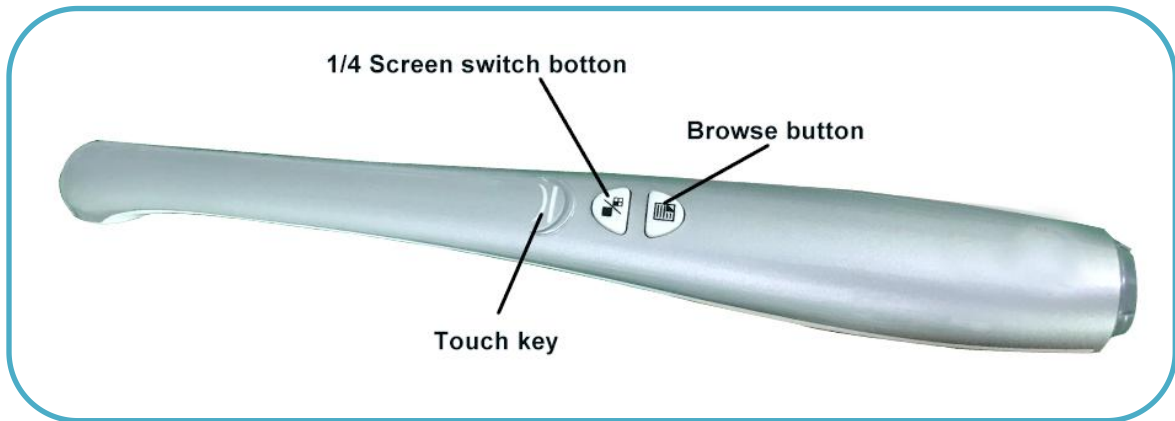
- ◆ Support LAN storage or TF card storage.
- ◆ High definition, Macro lens with glass seal, Medical special.
- ◆ The dentist can pay more attention to the patient with the auto-focus techniques.
- ◆ High-definition lossless image transmission patent technique.
- ◆ Multiple display patterns: full screen, freeze-frame, four split screen, double-screens comparison.
- ◆ The most comprehensive image output interfaces that supports AV/VGA/HDMI/USB.
- ◆ 10 LED with standard 5500k color temperature to fill light. Support LED lights off.
- ◆ The handle is designed with food grade material, and structure is more ergonomic.

<b>Product Parameter</b>	
Working power	5V or 24V
Temperature	5~40°C
Humidity	≤80%
Atmospheric Pressure	86.0kpa~106.0kpa
Input Power	4.5VA~5.5VA
Operation Mode	continuous use
Lifetime	more than 10000h
Max. control distance	3m
Imaging Sensor	CMOS sensor , 2 million pixels
Camera lens	high definition macro lens with glass seal
Backlight	10 LED lights and 5500K color temperature
Handle Button	Take photo by touching and function silicone keypad
Handle Wire	4 core air plug ; length 3m
Image Output	AV/ HDMI /VGA/USB
Screen Ratio	support 4:3 or 16:9
Foot Switch	support (self-configuring)
Hall Switch	handle with hall switch, control box supports magnetic switch
VGA Wire	3m professional VGA Wire

## Spare Part List

Control Box		Handle bracket & bracket screw	
Handle		Iron bar & screw	
VGA Wire		TF card (2GB)	
Handle Wire		TF card reader	
5V Power 24V Power  (Optional)		Protect Sheath (50pcs)	

## Handle



### 1、 Power on and start up automatically

Enter the start up screen with 10s,then enter full-screen preview

### 2、 Touch key

- 1) Click the **Touch key**, then the picture freeze-frame
- 2) Click again the **Touch key**,the picture will be saved to the directory on computer or TF card,and then back to full-screen preview automatically.
- 3) When the picture freeze-frame, press **1/4 Screen switch button**, then into double-screens comparison. Exit the mode by long press **Browse button**.
- 4) When the picture freeze-frame, press **Browse button**,Cancel the freeze-frame

### 3、 1/4 Screen switch button

- 1) Enter full-screen preview,press **1/4 Screen switch button** into four split screen mode,and then click **Touch key** continuously to take picture
- 2) In four split screen mode,press **1/4 Screen switch button**, and then back to full-screen preview.

## 4、 Browse button

- 1) Enter full-screen preview,press **Browse button**, then into picture browsing mode.
- 2) In picture browsing mode,press **1/4 Screen switch button** to check previous image; press **Browse button** to check next picture.
- 3) In picture browsing mode,long press **1/4 Screen switch button**,loosen the button, and than press **1/4 Screen switch button** to delete the current picture.
- 4) In picture browsing mode, long press **Browse button**, back to full-screen preview.

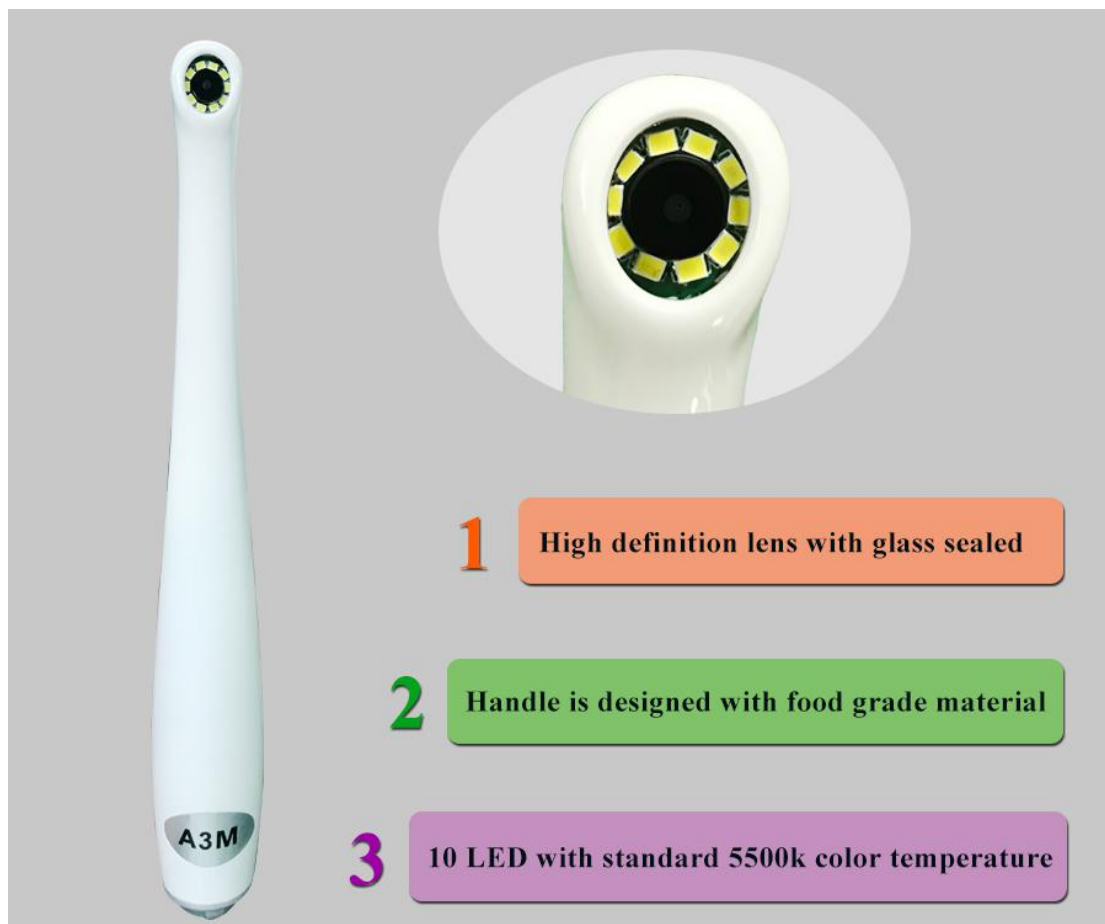
## 5、 Control Camera's LED (ON & OFF)

In full-screen preview mode, long press **Browse button**, LED OFF, long press **Browse button** again, LED ON

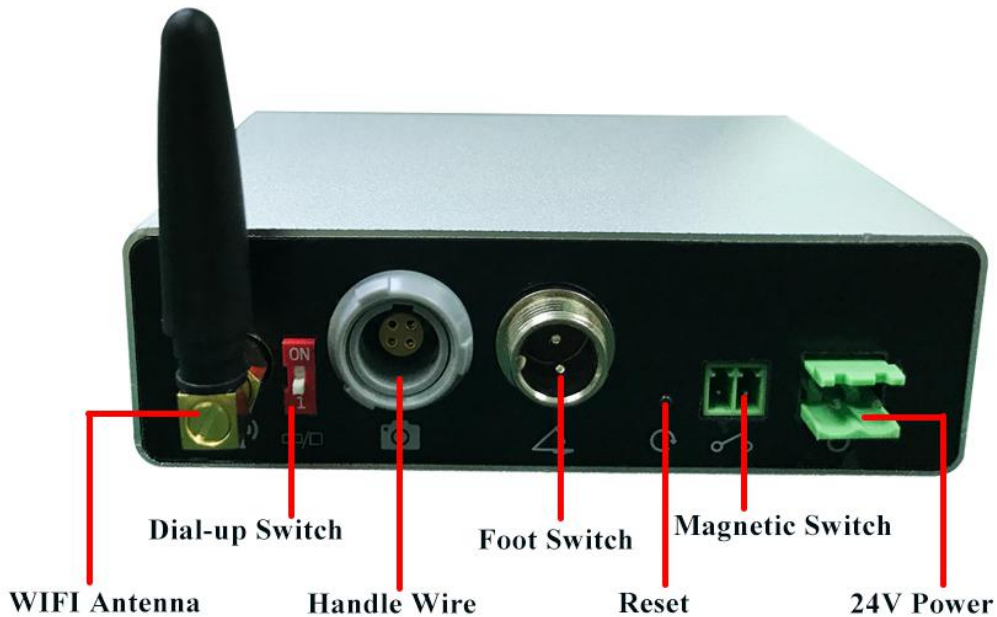
6、 Put the handle into the bracket,camera hibernate automatically. Take away the handle from bracket,the camera back to work automatically.

7、 Within 5 min, without any operation by camera,also not put the handle into the bracket,camera hibernate automatically. Press any button back to work.

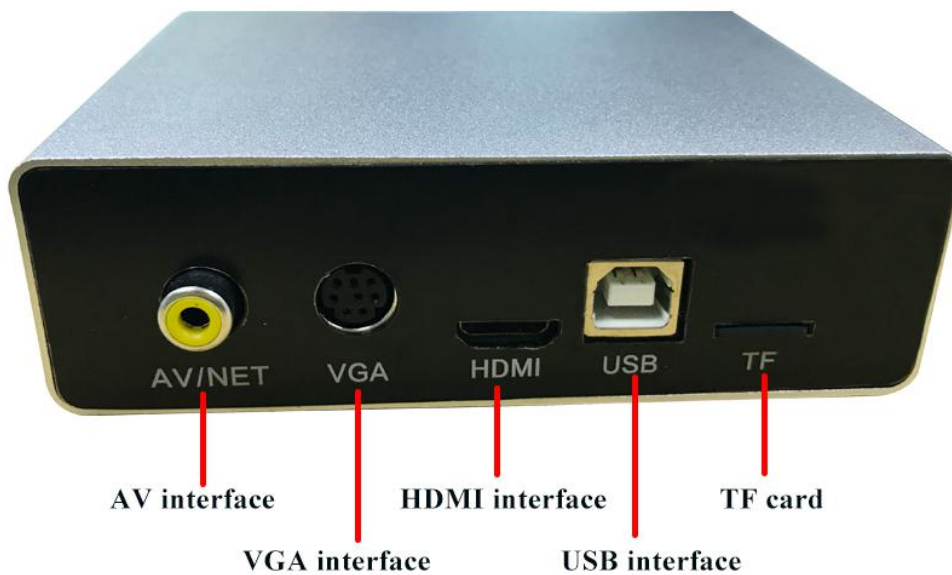
8、 The best distance of shooting is 2cm.Full screen with 2~4 teeth is clearest.



## Control Box

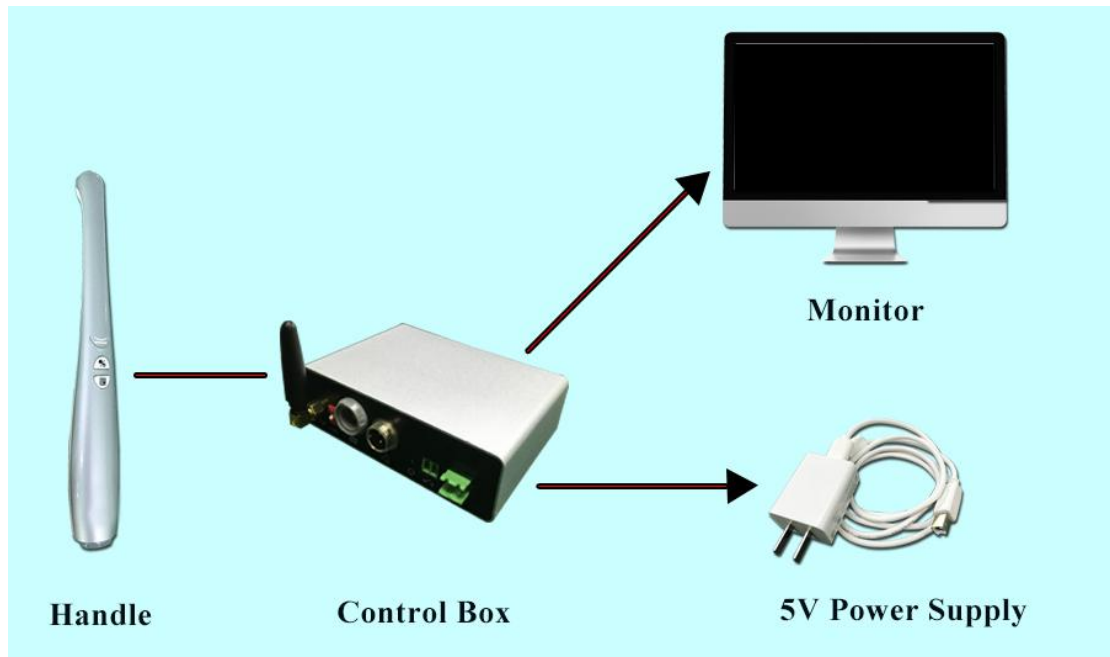


- 1) **Dial-up Switch**: Two choices of display Ratio is 4: 3 or 16: 9.
- 2) **Handle Wire** : Connect the handle and control box by handle wire.
- 3) **Foot Switch** : Take picture by foot switch
- 4) **Reset** : Restore the factory default settings
- 5) **Magnetic Switch** : Offer control signal that user can connect other controller
- 6) **24V Power** : Connect dental chair and control box by 24V power wire



- 1) **AV / VGA / HDMI interface**: connect the control box with the screen
- 2) **TF card interface**: TF card can be inserted to store the picture

## Drawing of Connection

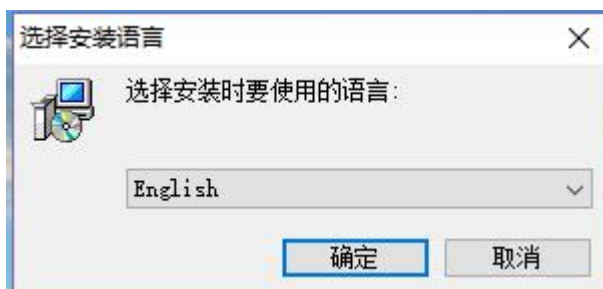


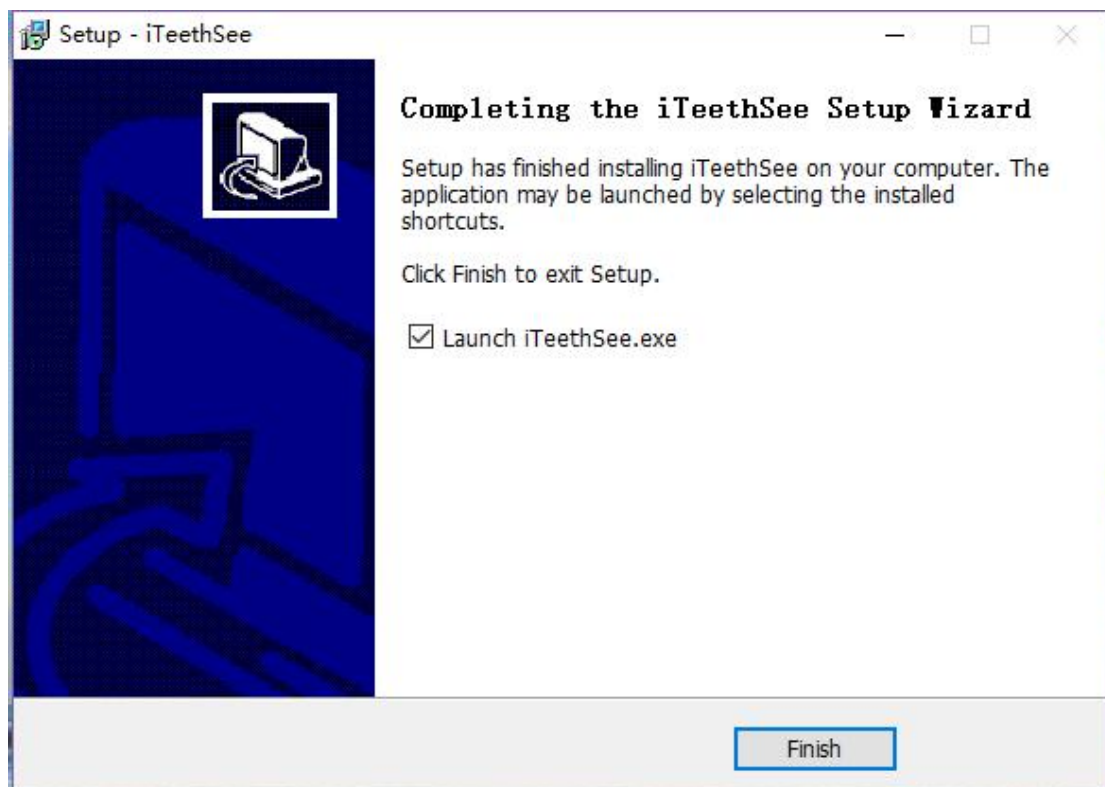
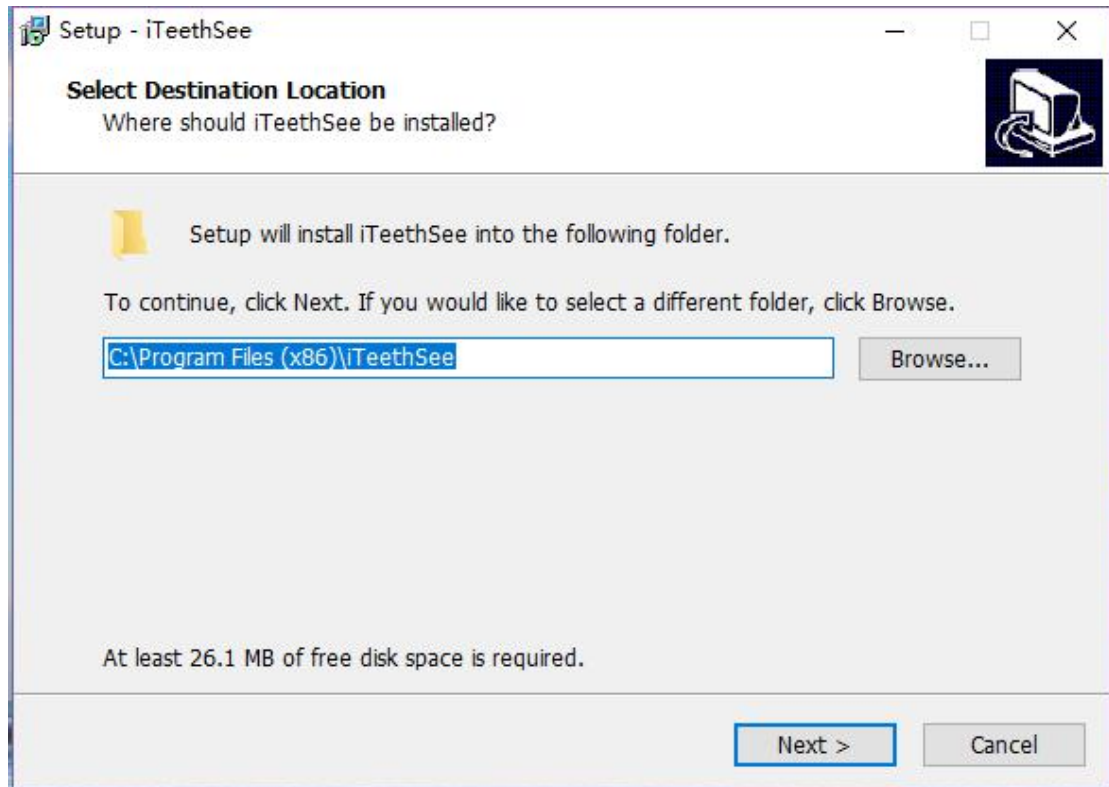
## Software Installation

1. Double - click iTeethSee.exe to install according to the prompt



2. Choose the language "English"



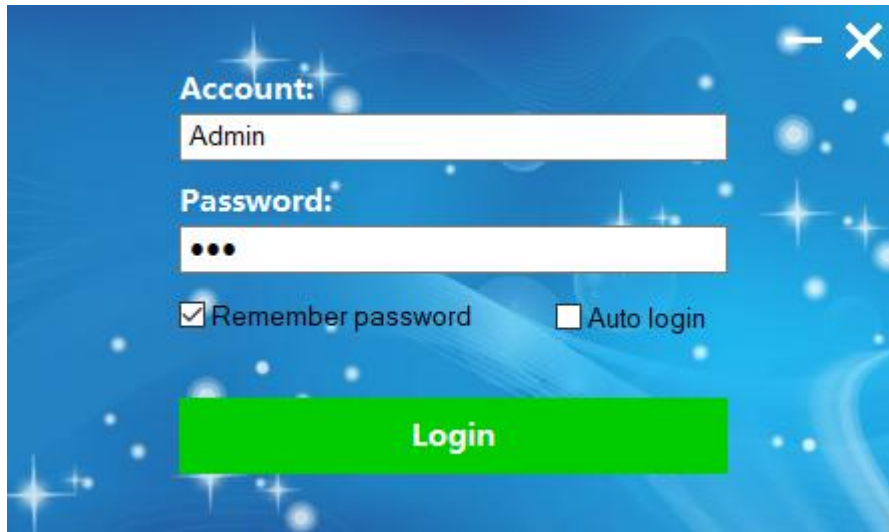


3. Fish installation.



4. Open the software, Account and password is the defaults.

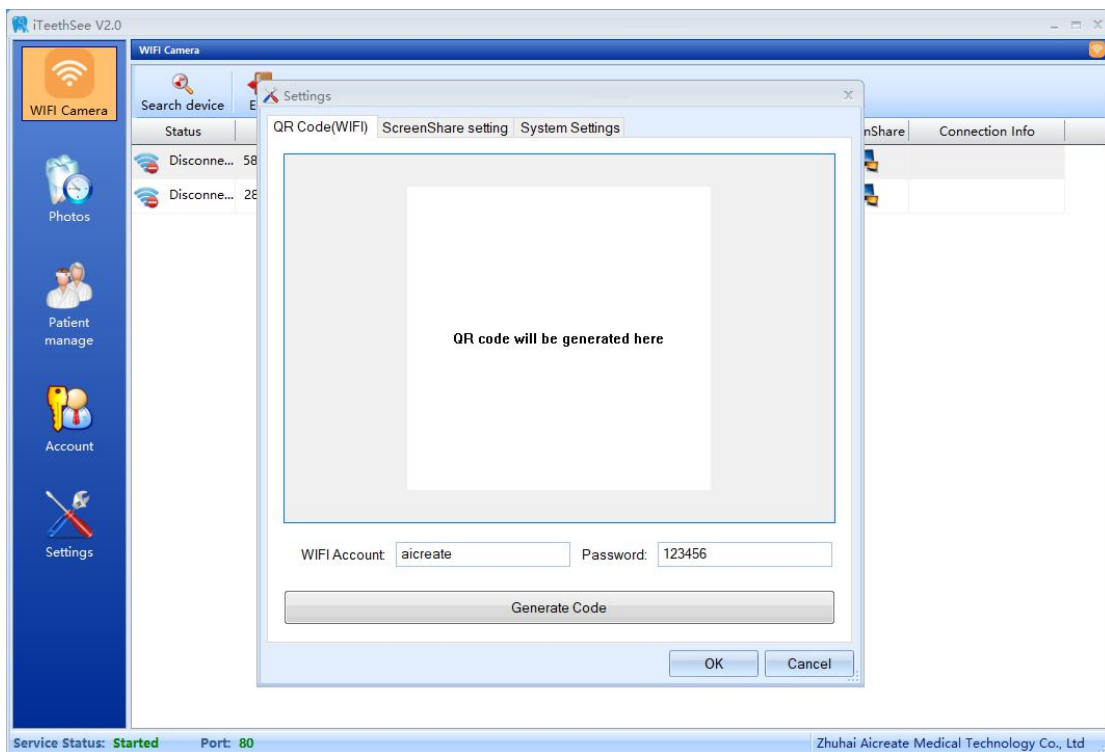
Account: Admin Password: 123



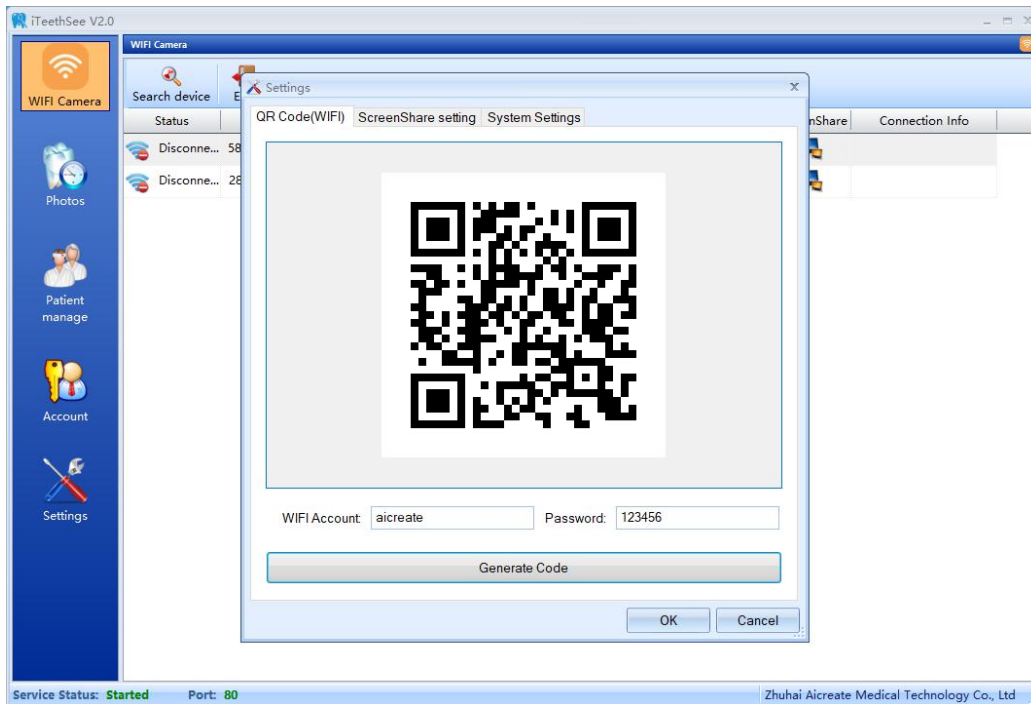
## Connect WIFI & Usage

### Intraoral Camera Connect WIFI

- 1) Settings --- QR(WIFI) --- Set up the WIFI Account and Password (The same LAN of your own computer) --- OK

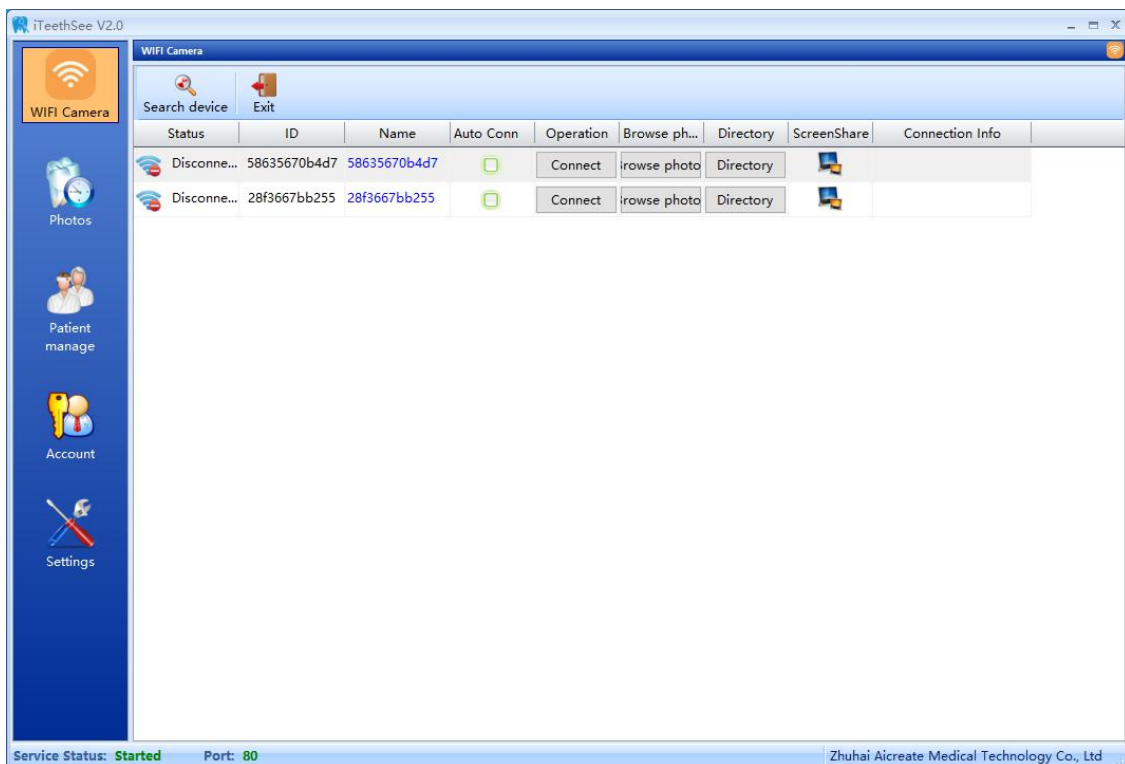


- 2) Use the handle , enter full-screen preview, long press **1/4 Screen switch button** to scan the QR code. Wait for a moment,the camera will show **“Connect WIFI successfully”**.



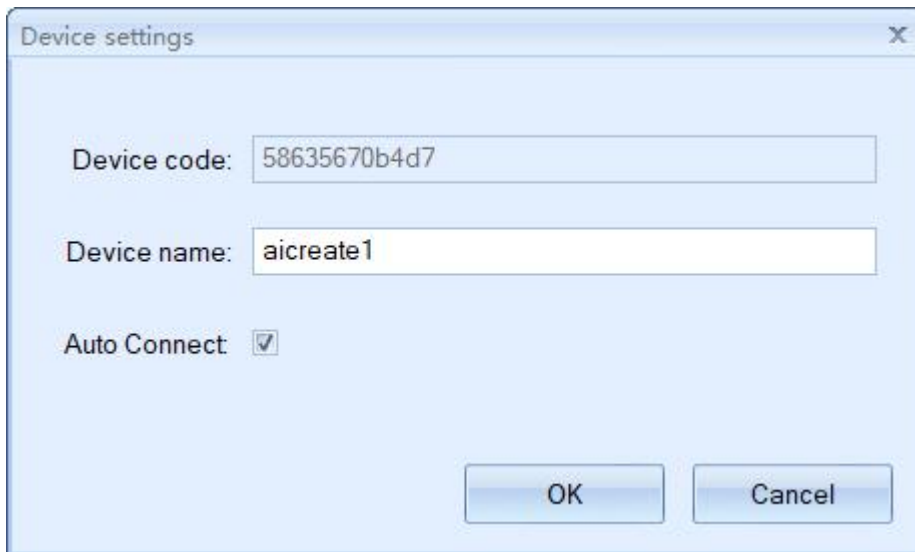
## How to Search Intraoral Camera?

Open the software,the computer will search all intraoral camera that in the same LAN. One computer can connect several intraoral camera. Or you can click “Search device” to search the camera.

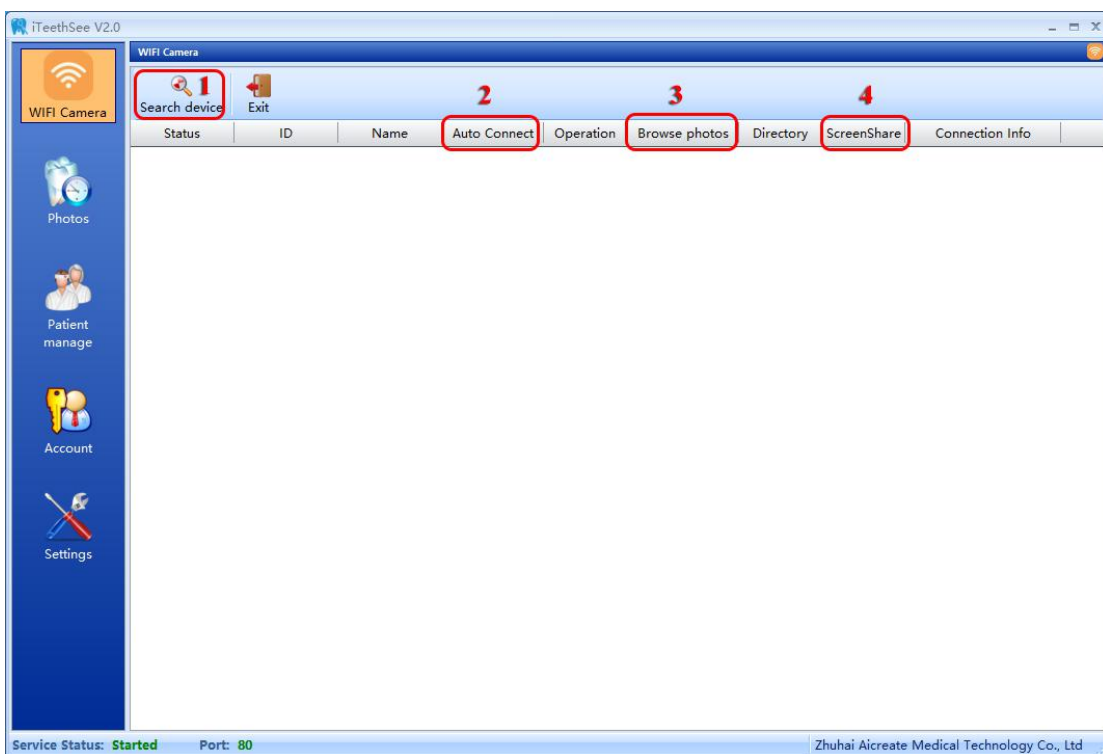


## Set the name of the Intraoral Camera

Click the name of the Intraoral Camera. You can modify the name of the Intraoral Camera. The pop-up page is as follows:



## Details of other functions



1. **Search device:** Search intraoral camera
2. **Auto Connect:** Connect the intraoral camera with company automatically when you log in next time.
3. **Browse photos:** Browse the teeth photos that have been saved.
4. **Screen Share:** Share the pictures in computer to intraoral camera.